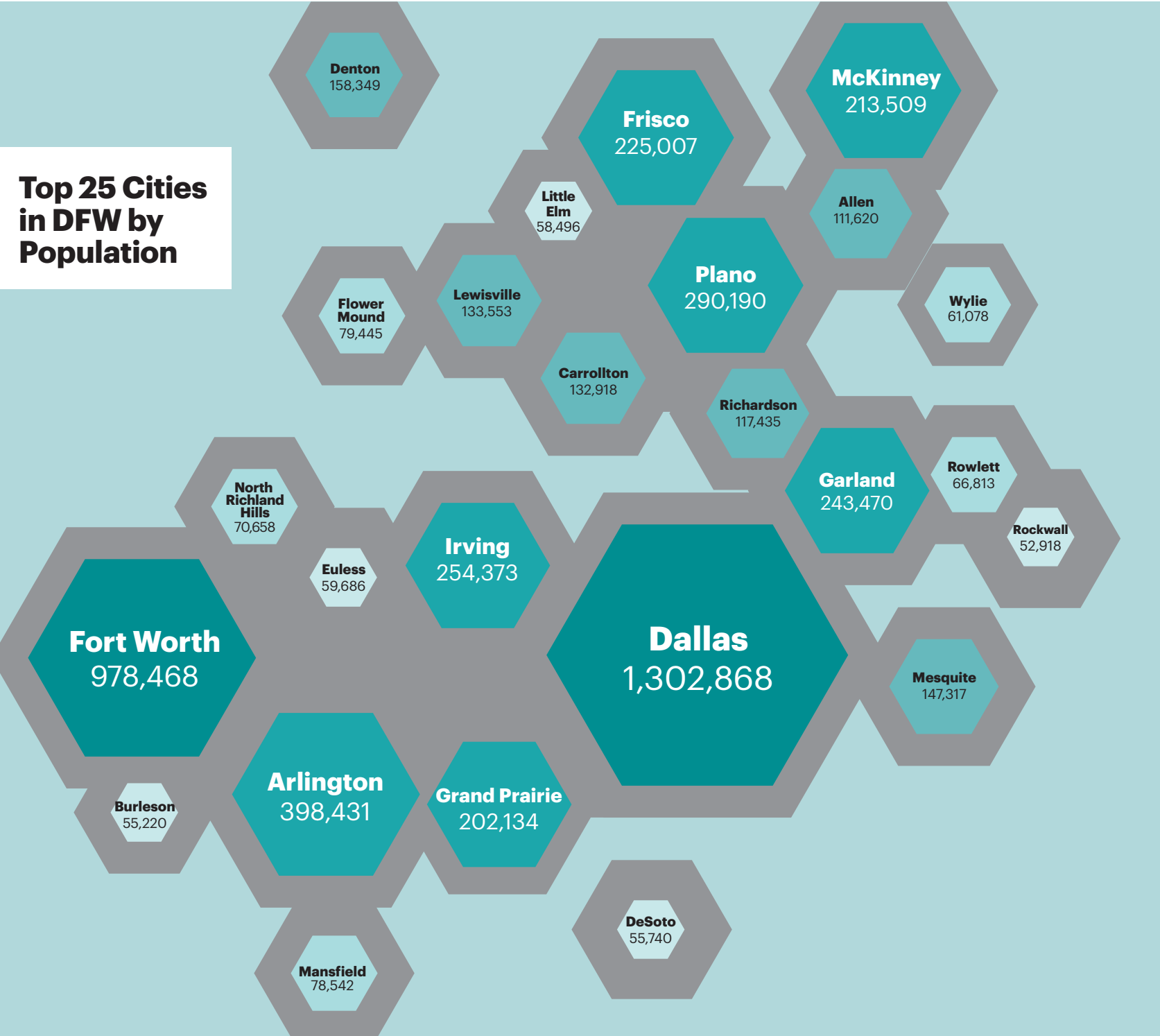


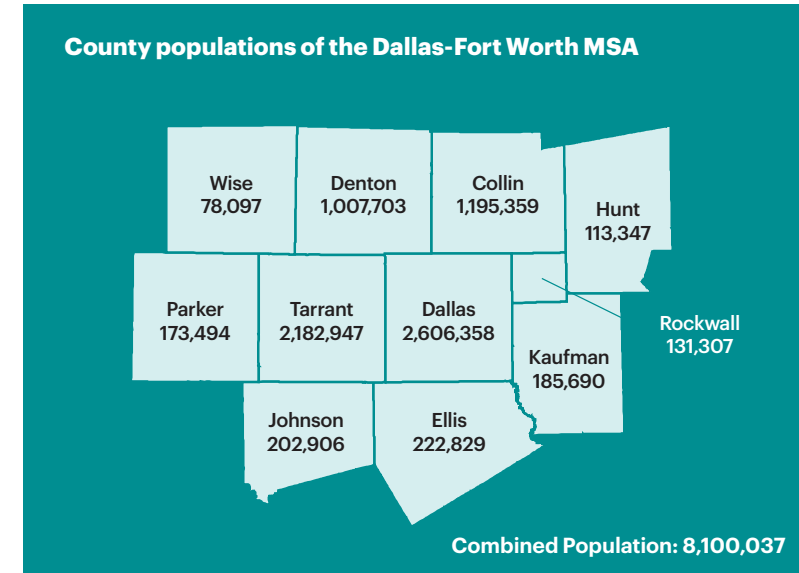
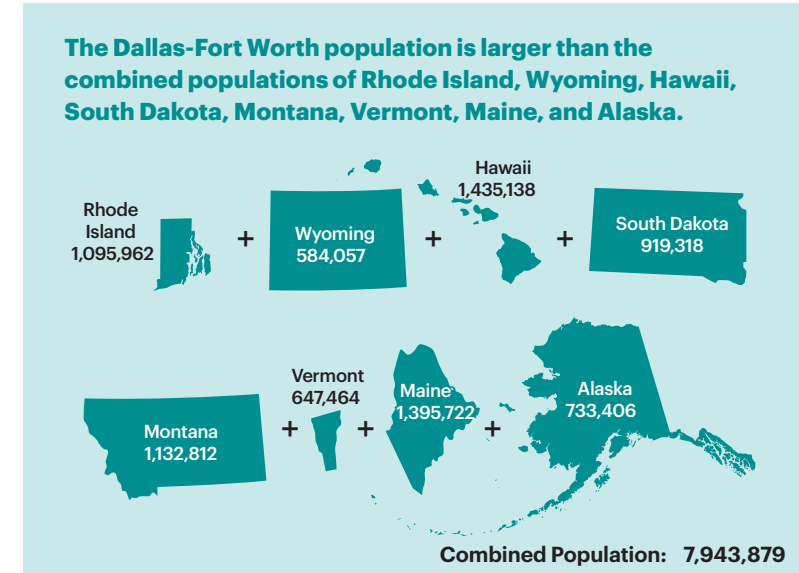
Regional Population

Dallas-Fort Worth consistently ranks among the nation's fastest-growing areas, and continuing job growth is a key factor. The population growth has, in turn, fueled real estate development as retailers and service providers expand to meet increasing demand.

Population and job growth have pushed Dallas and Fort Worth to redevelop and re-energize their central business districts, creating mixed-use developments with residential, office, and retail space in high-end urban environments. While Dallas and Fort Worth represent the largest population centers, seven suburbs—Arlington, Plano, Irving, Garland, Frisco, McKinney, and Grand Prairie—have populations exceeding 200,000. These municipalities offer an abundance of housing options for people to find a community that best fits their needs.



Dallas-Fort Worth by the Numbers



Ten Largest Metros in the U.S.

Metropolitan Statistical Area	2023 population	2022-2023 percent change
New York	19,498,249	-0.3%
Los Angeles	12,799,100	-0.6%
Chicago	9,262,825	-0.2%
Dallas-Fort Worth	8,100,037	1.9%
Houston	7,510,253	1.9%
Atlanta	6,307,261	1.1%
Washington, DC	6,304,975	0.6%
Philadelphia	6,246,160	0.1%
Miami	6,183,199	0.7%
Phoenix	5,070,110	1.0%

Components of Population Change: July 1, 2022, to July 1, 2023

Metropolitan Statistical Area	Total Population Change	Population Change Percentage	Vital events			Net migration		
			Natural increase	Births	Deaths	Total	International	Domestic
Dallas-Fort Worth	152,598	1.9%	51,377	102,227	50,850	101,419	40,962	60,457
Houston	139,789	1.9%	47,653	95,958	48,305	92,198	52,554	39,644
Atlanta	68,585	1.1%	26,132	70,969	44,837	42,512	24,126	18,386
Phoenix	49,240	1.0%	13,230	55,810	42,580	35,892	16,250	19,642
Miami	43,387	0.7%	10,878	65,533	54,655	32,663	94,725	-62,062
Washington, DC	39,084	0.6%	32,581	71,195	38,614	6,508	47,590	-41,082
Philadelphia	3,414	0.1%	10,264	67,727	57,463	-6,630	16,472	-23,102
Chicago	-16,602	-0.2%	20,090	96,035	75,945	-36,706	34,604	-71,310
New York	-65,549	-0.3%	68,900	213,772	144,872	-133,571	104,923	-238,494
Los Angeles	-71,037	-0.6%	30,274	126,031	95,757	-101,387	53,247	-154,634

Source: US Census Bureau