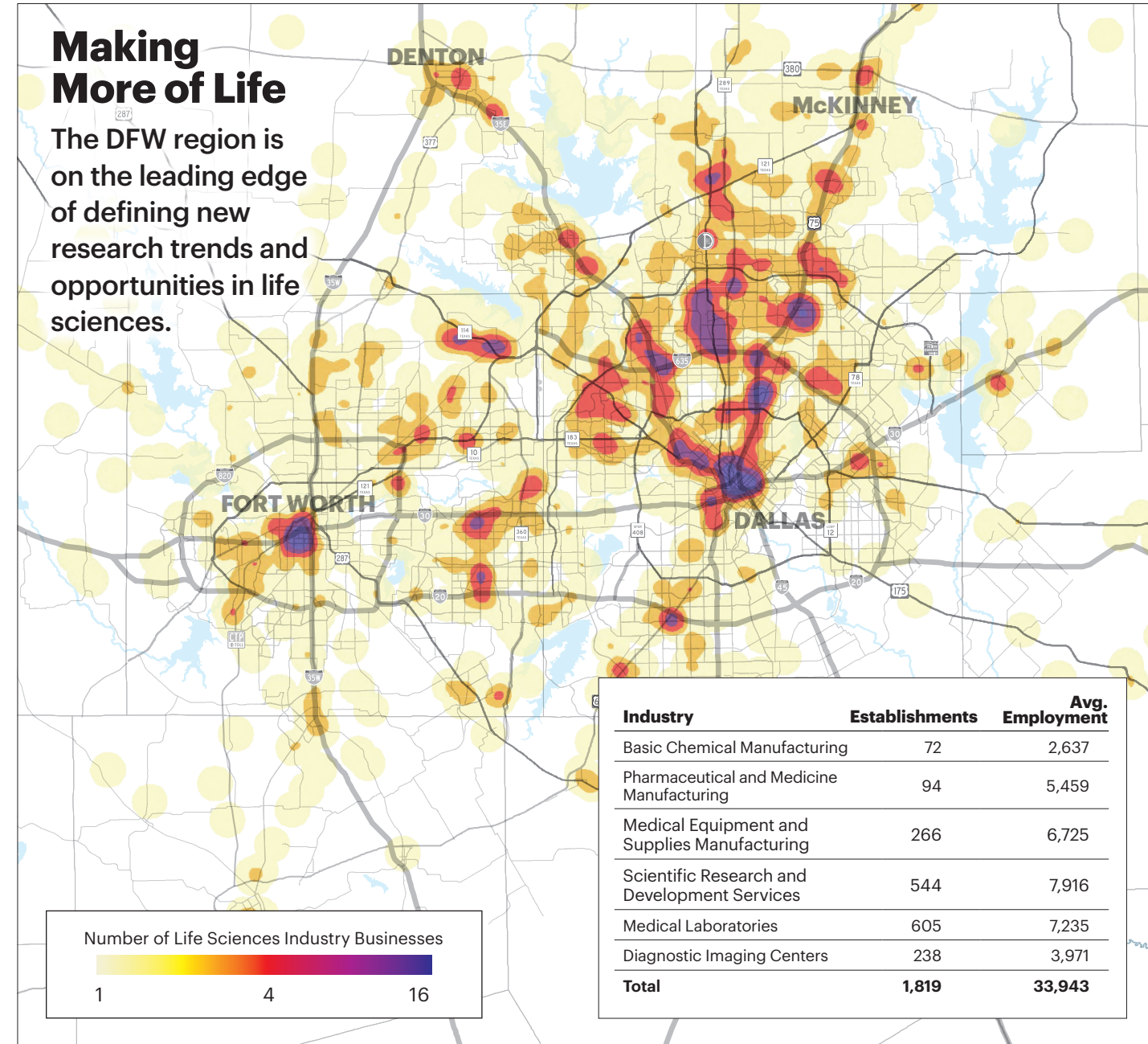


Life Science

The Dallas-Fort Worth life science industry is dominated by pharmaceutical, optical, and medical device manufacturers, such as Alcon (Fort Worth) and EssilorLuxottica (Dallas). The region has shown enormous capacity to attract major industry players like McKesson and Galderma.

The convergence of innovative research and development with regional expertise in emerging technologies defines DFW's life science industry. UT Southwestern Medical Center in Dallas is among the nation's best in biology and biochemistry research, while UNT's Health Science Center (Fort Worth), and Pegasus Park (Dallas)—regional hubs for life science discovery and commercialization—are providing a supportive ecosystem that attracts the most promising startups and federal investments like the ARPA-H Customer Experience Hub.



Source: Lightcast, Bureau of Labor Statistics

Making More of Life
The DFW region is on the leading edge of defining new research trends and opportunities in life sciences.

Sample of Life Sciences Companies in Dallas-Fort Worth

- | | | |
|----------------------------|------------------------------|----------------------------------|
| Abbott Laboratories | DJO Global | Orano Med |
| Actuate Therapeutics | Eosera | Orthofix |
| Alcon | EssilorLuxottica | Osteal Therapeutics |
| Alpha Cognition | Form Bio | OsteoMed |
| American Heart Association | Fortrea | Plexon Inc |
| Argon Medical Devices | Galderma Laboratories | Progressive Laboratories |
| ARPA-H Hub | Gradalis | Psychemedics Corp. |
| AstraZeneca | Highlander Health | Quest Diagnostics |
| Atrion Corporation | Innovative Life Sciences | ReCode Therapeutics |
| Ayuviv | Inogen | Retina Foundation |
| B. Braun Medical | Integer Holdings | Retractable Technologies |
| BioLabs Pegasus Park | Koya Medical | Sanara Medtech |
| Bio-Synthesis Inc | LabCorp | Signature Biologics |
| Bledsoe Brace Systems | Lantern Pharma | Smith & Nephew |
| Boehringer Ingelheim | LinedanceAI | Sovereign Pharmaceuticals |
| Cardinal Health Inc | Mary Crowley Cancer Research | Spark Biomedical |
| Caris Life Sciences | McKesson | St. Jude Medical Neuromodulation |
| Carter Bloodcare | Med Fusion | Stat Labs |
| Celanese | MEDNA Scientific | Strukmyer |
| Cencora | Medtronic | Stryker Orthopaedics |
| CerSci | Mentor Texas | Swiss American CDMO |
| Colossal | Merck | Taysha Gene Therapies |
| Cost Plus Drugs | Merieux NutriSciences | TissueGen |
| Covance | Nanoscope Therapeutics | Universal DX |
| Crown Laboratories | Neuro Rehab VR | Urgo Medical |
| CX Precision Medicine | OncoNano | Verily |
| DesignPlex Biomedical | OraMetrix Inc. | Vigilant Software |
| DFB Pharmaceuticals | | |

Cancer Prevention & Research Institute of Texas

■ CPRIT's goal is to expedite innovation and commercialization in the area of cancer research and to enhance access to evidence-based prevention programs and services throughout Texas.

■ CPRIT accepts applications and awards grants for a wide variety of cancer-related research and for the delivery of cancer prevention programs and services by public and private entities located in Texas.

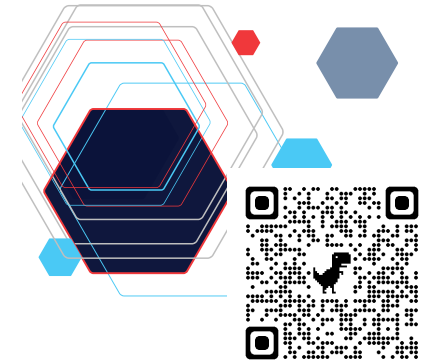
■ CPRIT collaborates with a variety of entities, including public and private institutions of higher education, academic health institutions, universities, governmental organizations, nongovernmental organizations, and public and private companies.



BioNTX is the bioscience and healthcare innovation trade organization in North Texas, and an affiliate of the Biotechnology Innovation Organization in Washington, D.C. They are the bridge between businesses and job opportunities, providing direct cost savings services, networking events, and educational programming to the bioscience and healthcare innovation community in North Texas. www.biontx.org

EXPAND TO THE DALLAS REGION

LIFE science
CONVERGING IN DFW



Dallas-Fort Worth is a magnet for major companies and talent. The convergence of life science and tech is happening now in DFW, making us a hub for research and progress and a destination for companies looking to launch, grow, or reposition their life science business.

The DFW LIFE SCIENCE Economic Development Guide is an essential tool for understanding the Dallas-Fort Worth biotech and life science community. This data-driven resource can be used by companies making relocation or expansion decisions.

WWW.LIFESCIENCEDFW.COM



BHIANT promotes collaboration, workforce development, and strategic initiatives to support life science industry growth and innovation in North Texas.



WWW.BHIANT.COM

Legend:

Occupation
Jobs | Median hourly earnings



Bioengineers and Biomedical Engineers
440 | \$39.35



Chemical Engineers
223 | \$72.36



Medical Scientists, Except Epidemiologists
2,067 | \$46.65



Chemists
821 | \$39.48



Environmental Scientists and Specialists, Including Health
804 | \$39.34



Pharmacists
7,037 | \$66.58



Diagnostic Medical Sonographers
2,244 | \$42.74



Pharmacy Technicians
11,999 | \$20.67



Ophthalmic Laboratory Technicians
1,333 | \$17.30