

Electricity

The Dallas-Fort Worth region ranks close to the national median in terms of overall electric rates. The state of Texas operates on a power grid separate from that of the rest of the country, meaning DFW ranks high in electrical systems reliability.

The Electric Reliability Council of Texas (ERCOT) manages the flow of electric power to 27 million Texas customers, representing about 90 percent of the state's electric load.

In North Texas, Oncor is the investor-owned, regulated utility that provides electricity transmission and distribution to residential, commercial, and industrial customers. However, Texas has a deregulated electricity market, so consumers can shop around for providers, giving them flexibility in pricing, products, and services.

Dallas Area Estimated Electricity Costs

Residential

	Average Rate (kWh)	Est. Monthly Bill
500 kWh	0.157	\$79
1000 kWh	0.151	\$151
2000 kWh	0.148	\$295

Commercial

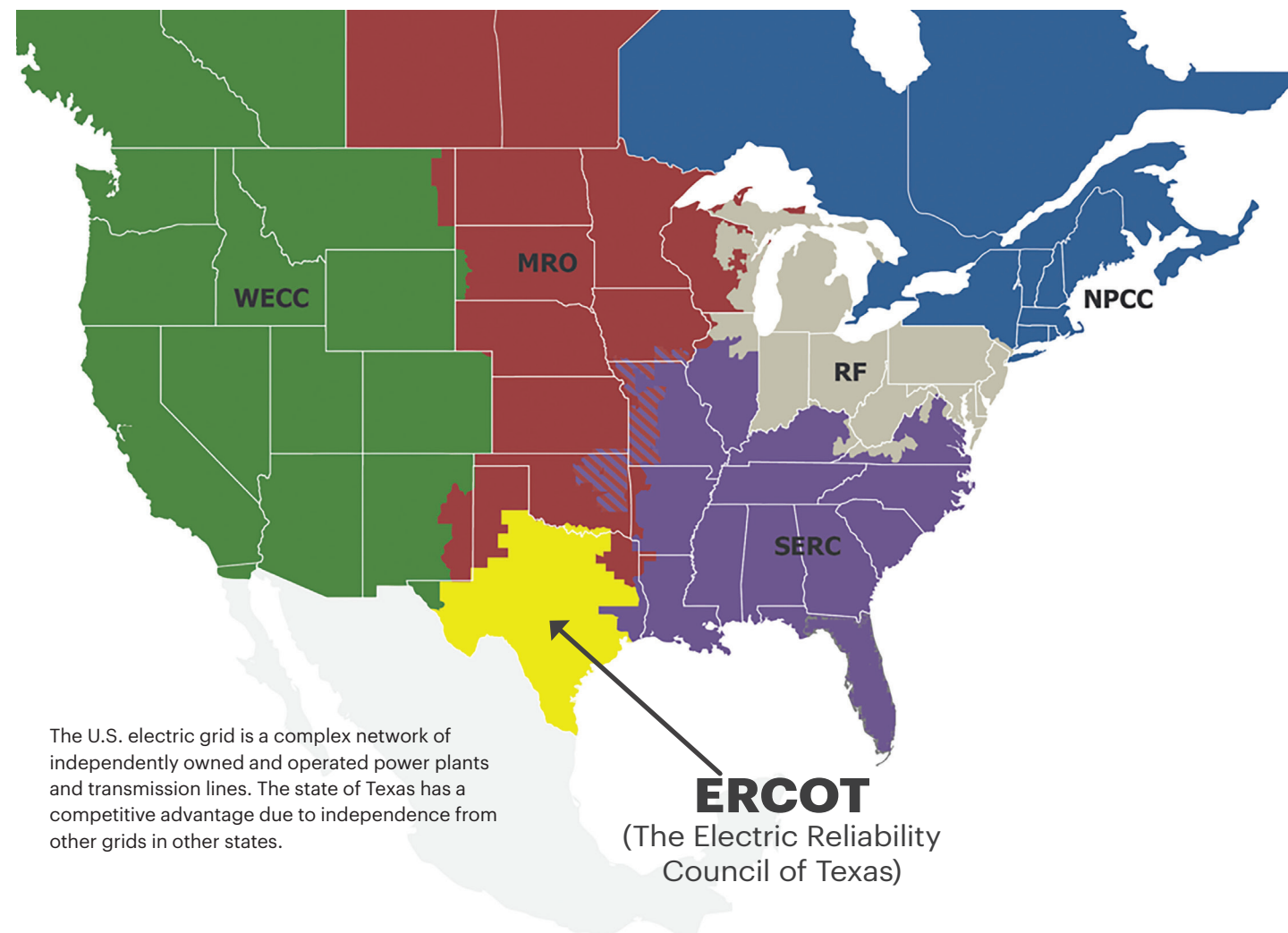
	Est. Rate (kWh)	Est. Monthly Bill
10,000 kWh	0.126	\$1,264
30,000 kWh	0.109	\$3,261
80,000 kWh	0.105	\$8,384
200,000 kWh	0.096	\$19,200

Industrial

	Est. Rate (Power in MW; kWh)	Est. Monthly Bill
5 MW (3,600,000kWh)	0.086	\$310,680
20 MW (14,400,000 kWh)	0.080	\$1,146,240
50 MW (36,000,000 kWh)	0.072	\$2,577,600

Source: Power to Choose for residential average fixed rates among providers; Vistra Corp. for commercial and industrial estimates.

U.S. Electric Grid



Texas Electric Generation by Source (2023Q4-2024Q3)

	Net Electricity Generation	GwH	% Total	U.S. Average
🔥	Coal-Fired	65,447	11.8%	15.3%
🔥	Petroleum-Fired	130	0.0%	0.4%
🏭	Natural Gas-Fired	287,052	51.8%	43.5%
☢️	Nuclear	39,917	7.2%	18.3%
💧	Hydroelectric	825	0.1%	5.6%
🌬️	Wind	121,902	22.0%	10.3%
☀️	Solar	35,821	6.5%	4.8%
🌿	Other Renewables	1,185	0.2%	1.5%
⚫	Other	2,405	0.4%	0.3%
Total Net Electricity Generation		554,684		

Source: Energy Information Administration

Water, Sewer, Gas, & Telecommunications

Dallas-Fort Worth is expected to continue growing at a rapid rate. In order to keep up with projected demand for utilities, the region's leaders have made it a priority to secure reliable sources of water and gas. The area's numerous lakes and the abundance of natural gas reserves, located in the geologic formation known as the Barnett Shale, ensure that DFW will have access to these resources in the decades to come.

AT&T and Texas Instruments, among others, call DFW home. As a result, the region is a strong telecommunications hub. Multiple carriers' fiber networks connect North Texas cities to one another, as well as to the rest of the U.S. and the world. Redundancies in connectivity, combined with relative freedom from natural disasters, means minimal risk of downtime for any business operating in the vicinity. And with the proliferation of 5G technologies by all of the major service providers, businesses in DFW have an unlimited ability to be connected internally, to other businesses, and to their customers.

Rates and Infrastructure Within DFW

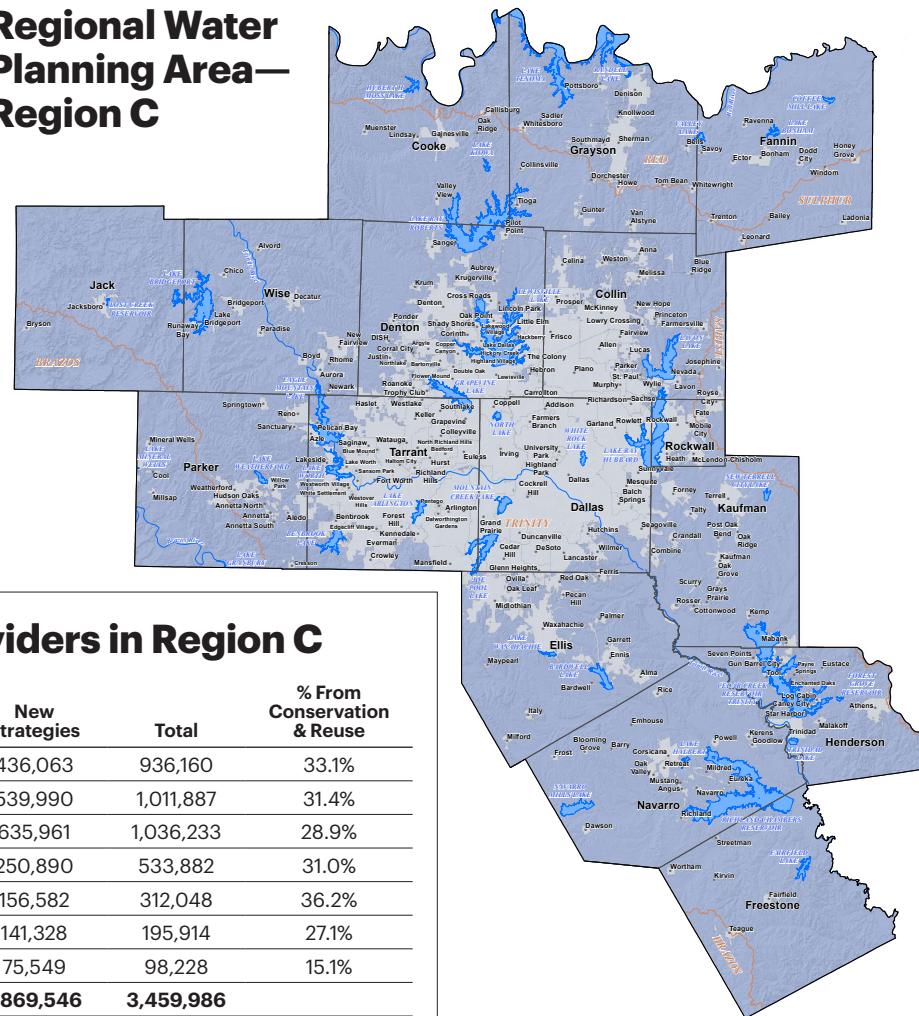
Water and Sewer

Residential	Price per 1,000 gallons	
	Water	Sewer
Up to 4,000	\$2.07	\$5.88
4,001 to 10,000	\$4.53	\$5.88
10,001 to 20,000	\$7.44	\$5.88
20,001 to 30,000	\$10.61	\$5.88
Above 30,000	\$12.35	\$5.88

General Services	Water		Sewer	
	Water	Sewer	Water	Sewer
Up to 10,000	\$4.97	\$5.12	\$5.12	\$5.12
Above 10,000	\$5.46	\$5.12	\$5.12	\$5.12
Above 10,000 and 1.4 times annual average	\$8.10	\$5.12	\$5.12	\$5.12

*Prices reflect prompt-pay discount and are effective Oct. 1, 2024
Source: Dallas Water Utilities

Regional Water Planning Area—Region C

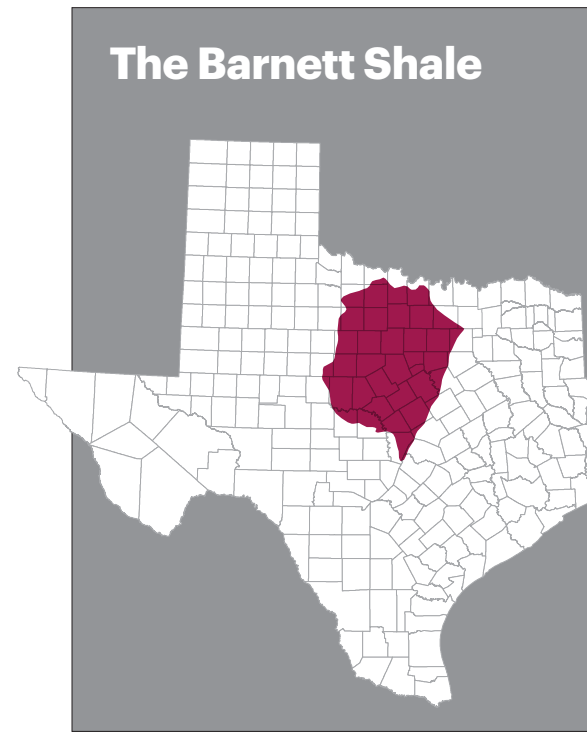


2070 Supplies for Water Providers in Region C

Wholesale Water Provider	Available	New Strategies	Total	% From Conservation & Reuse
Dallas Water Utilities	500,097	436,063	936,160	33.1%
Tarrant Regional Water District	471,897	539,990	1,011,887	31.4%
North Texas Municipal Water District	400,272	635,961	1,036,233	28.9%
City of Fort Worth	282,992	250,890	533,882	31.0%
Trinity River Authority	155,466	156,582	312,048	36.2%
Upper Trinity Regional Water District	54,586	141,328	195,914	27.1%
Greater Texoma Utility Authority	22,679	75,549	98,228	15.1%
Total for Region C*	1,590,440	1,869,546	3,459,986	
2070 Demand in Region C			2,898,540	

*Total includes other providers

Source: Dallas Water Utilities, Region C Water Planning Group



Natural Gas Rates*

	Customer Charge per Month	Commodity Charge/CcF
Residential	\$34.00	\$0.05000
Commercial	\$76.75	\$0.16672
Industrial	\$1,586.00	\$0.6962 (0-1,500 MMBtu) \$0.5566 (1,501-5,000 MMBtu) \$0.2393 (over 5,000 MMBtu)

*Rates are for Dallas only—different rates apply to other cities and unincorporated areas. Excludes additional charges such as gas cost recovery, weather normalization, taxes and fees. Industrial commodity charge is based on level of MMBtu's used. Rate is current as of October 1, 2024, and is subject to change.

Source: Atmos Energy

◀ **The Barnett Shale is one of the largest natural gas fields in North America.** Exploration, drilling, and production in the Barnett Shale have transformed the economy with thousands of jobs and millions of dollars in investment, and contributed to opportunities and prosperity for the entire region.

Telecommunications

Major U.S. Internet Peering Points



◀ Connectivity is a core strength of Dallas-Fort Worth. It is one of the primary peering points of all U.S. internet traffic, enabling companies located here to have fast and reliable access to the world's telecommunications infrastructure.