

Electricity

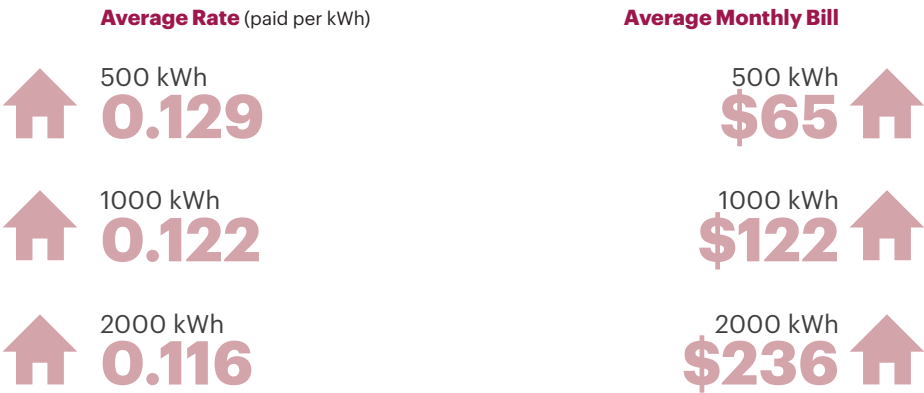
The Dallas–Fort Worth region ranks close to the national median in terms of overall electric rates. The state of Texas operates on a power grid separate from that of the rest of the country, meaning DFW ranks high in electrical systems reliability.

The Electric Reliability Council of Texas (ERCOT) manages the flow of electric power to 26 million Texas customers. Furthermore, because Texas has a deregulated electricity market, consumers can shop around and choose their service providers, giving them flexibility in pricing and service.

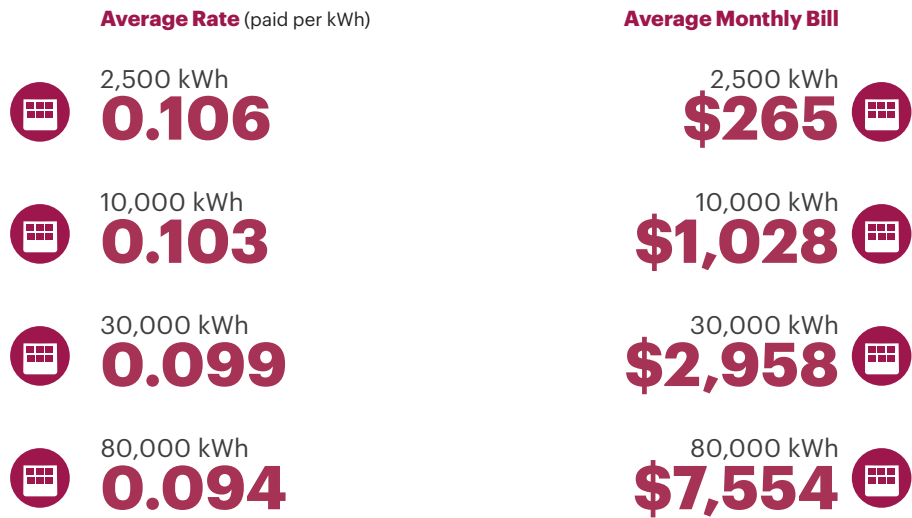
Dallas Area Monthly Electricity Costs

Based on market pricing available February 2023 per EnergyBot data

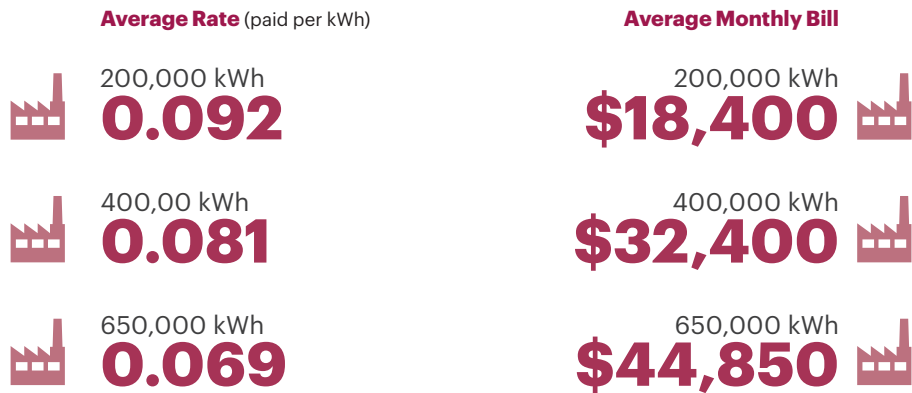
Residential



Commercial

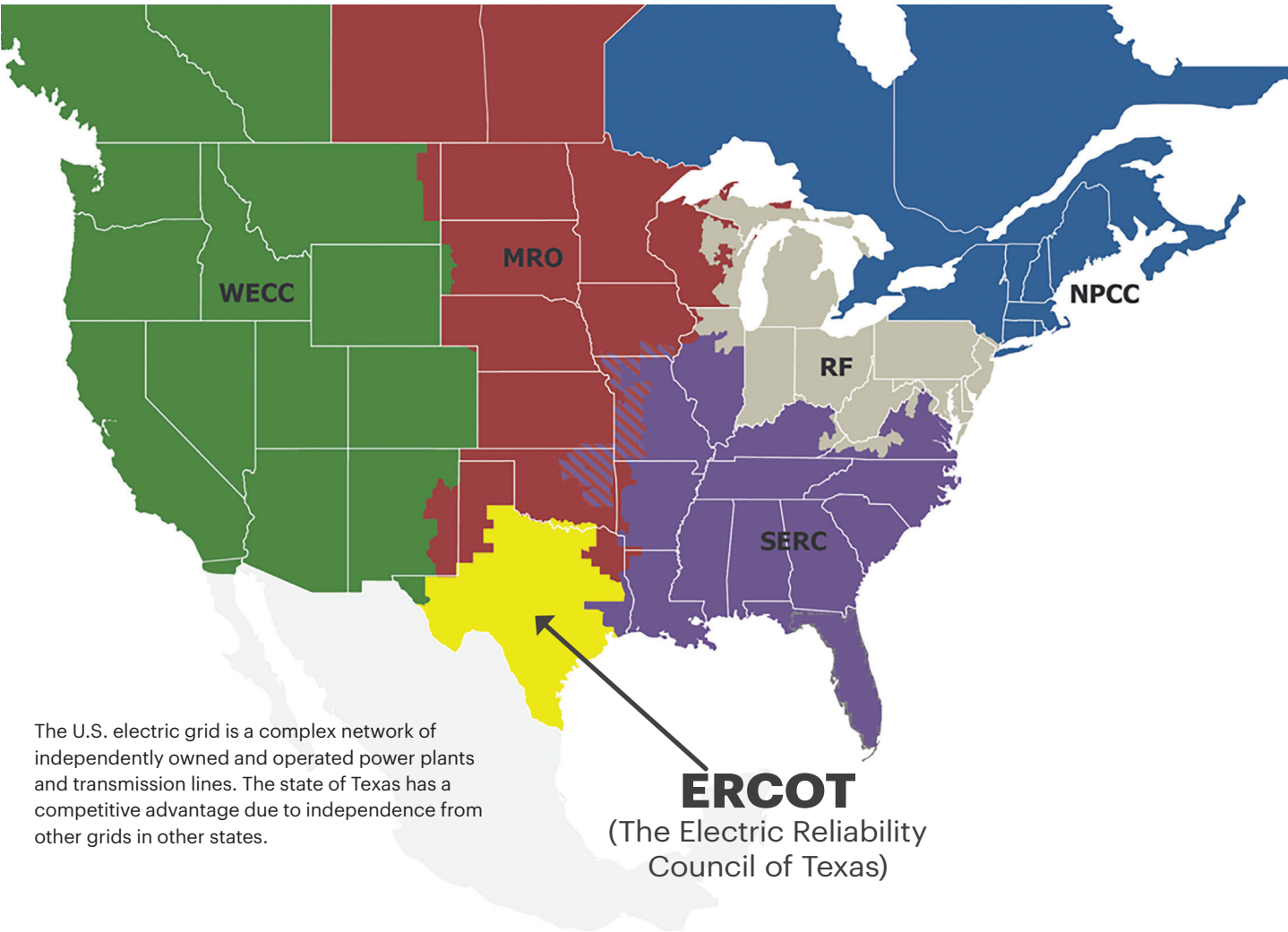


Industrial



Source: EnergyBot

U.S. Electric Grid



Texas Electric Generation by Source (2022Q4-2023Q3)

	Net Electricity Generation	GwH	% Total	U.S. Average
	Coal-Fired	73,932	13.7%	16.8%
	Petroleum-Fired	332	0.1%	0.5%
	Natural Gas-Fired	274,511	51.0%	42.6%
	Nuclear	40,400	7.5%	18.5%
	Hydroelectric	731	0.1%	5.7%
	Wind	118,857	22.1%	10.2%
	Solar	25,902	4.8%	3.8%
	Other Renewables	1,244	0.2%	1.6%
	Other	2,605	0.5%	0.4%
Total Net Electricity Generation		538,514		

Source: Energy Information Administration

Water, Sewer, Gas, & Telecommunications

Dallas-Fort Worth is expected to continue growing at a rapid rate. In order to keep up with projected demand for utilities, the region’s leaders have made it a priority to secure reliable sources of water and gas. The area’s numerous lakes and the abundance of natural gas reserves, located in the geologic formation known as the Barnett Shale, ensure that DFW will have access to these resources in the decades to come.

AT&T and Texas Instruments, among others, call DFW home. As a result, the region is a strong telecommunications hub. Multiple carriers’ fiber networks connect North Texas cities to one another, as well as to the rest of the U.S. and the world. Redundancies in connectivity, combined with relative freedom from natural disasters, means minimal risk of downtime for any business operating in the vicinity. And with the proliferation of 5G technologies by all of the major service providers, businesses in DFW have an unlimited ability to be connected internally, to other businesses, and to their customers.

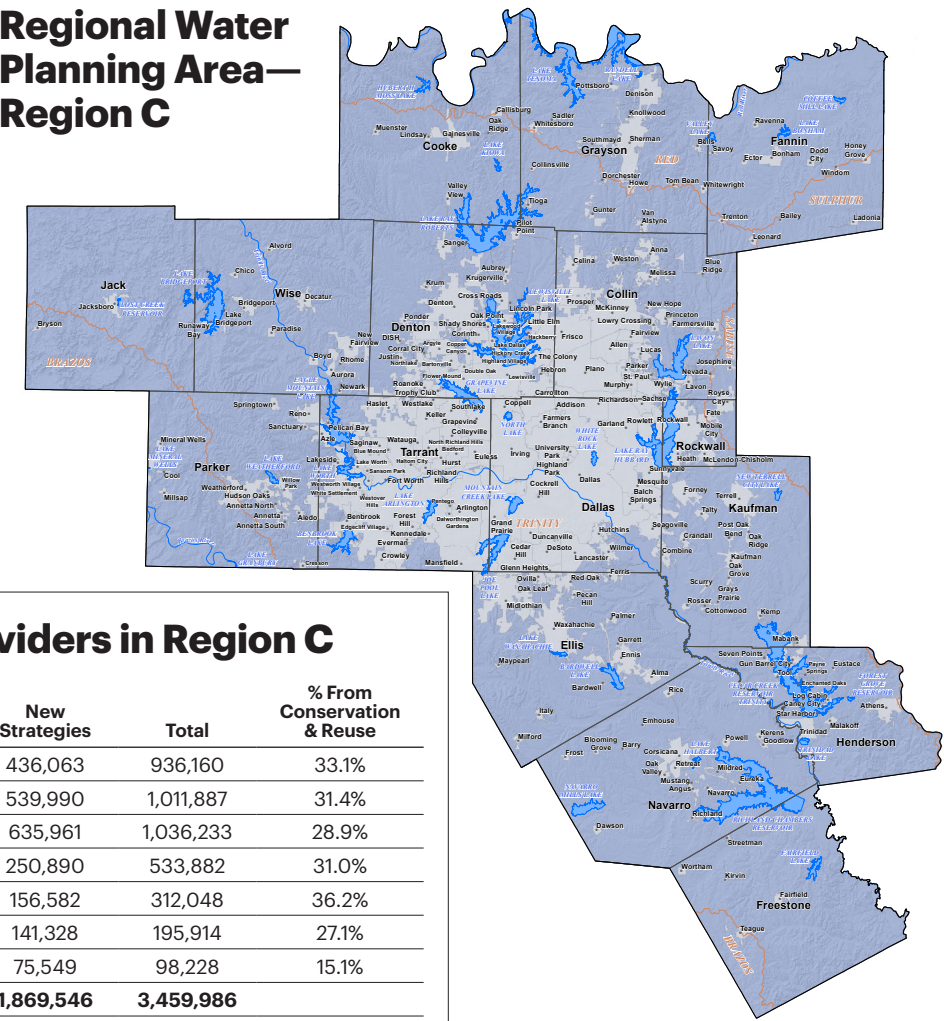
Rates and Infrastructure Within DFW

Water and Sewer

Residential	Price per 1,000 gallons		
	Water	Sewer	
	Up to 4,000	\$2.03	\$5.81
	4,001 to 10,000	\$4.44	\$5.81
	10,001 to 20,000	\$7.26	\$5.81
	20,001 to 30,000	\$10.64	\$5.81
	Above 30,000	\$12.03	\$5.81
General Services	Water	Sewer	
	Up to 10,000	\$4.93	\$4.96
	Above 10,000	\$5.31	\$4.96
	Above 10,000 and 1.4 times annual average	\$8.05	\$4.96

*Prices reflect prompt-pay discount and are effective Oct. 1, 2023
Source: Dallas Water Utilities

Regional Water Planning Area—Region C



2070 Supplies for Water Providers in Region C

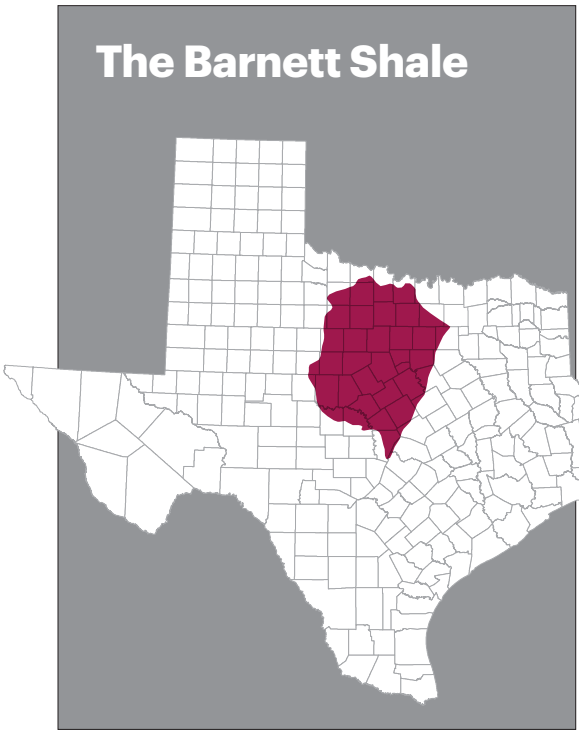
(Acre-feet per year)

Wholesale Water Provider	Available	New Strategies	Total	% From Conservation & Reuse
Dallas Water Utilities	500,097	436,063	936,160	33.1%
Tarrant Regional Water District	471,897	539,990	1,011,887	31.4%
North Texas Municipal Water District	400,272	635,961	1,036,233	28.9%
City of Fort Worth	282,992	250,890	533,882	31.0%
Trinity River Authority	155,466	156,582	312,048	36.2%
Upper Trinity Regional Water District	54,586	141,328	195,914	27.1%
Greater Texoma Utility Authority	22,679	75,549	98,228	15.1%
Total for Region C*	1,590,440	1,869,546	3,459,986	
2070 Demand in Region C			2,898,540	

*Total includes other providers

Source: Dallas Water Utilities, Region C Water Planning Group

The Barnett Shale



Natural Gas Rates*

	Customer Charge per Month	Commodity Charge/CcF
Residential	\$28.50	\$0.28374
Commercial	\$62.00	\$0.11907
Industrial	\$1,269.15	\$0.3838 (0-1,500 MMBtu) \$0.2800 (1,501-5,000 MMBtu) \$0.0441 (over 5,000 MMBtu)

*Rates are for Dallas only—different rates apply to other cities and unincorporated areas. Excludes additional charges such as gas cost recovery, weather normalization, taxes and fees. Industrial commodity charge is based on level of MMBtu’s used. Rate is current as of October 1, 2023, and is subject to change.

Source: Atmos Energy

◀ The Barnett Shale is one of the largest natural gas fields in North America. Exploration, drilling, and production in the Barnett Shale have transformed the economy with thousands of jobs and millions of dollars in investment, and contributed to opportunities and prosperity for the entire region.

Telecommunications

Major U.S. Internet Peering Points



◀ Connectivity is a core strength of Dallas–Fort Worth. It is one of the primary peering points of all U.S. internet traffic, enabling companies located here to have fast and reliable access to the world’s telecommunications infrastructure.