

Mobility 2045

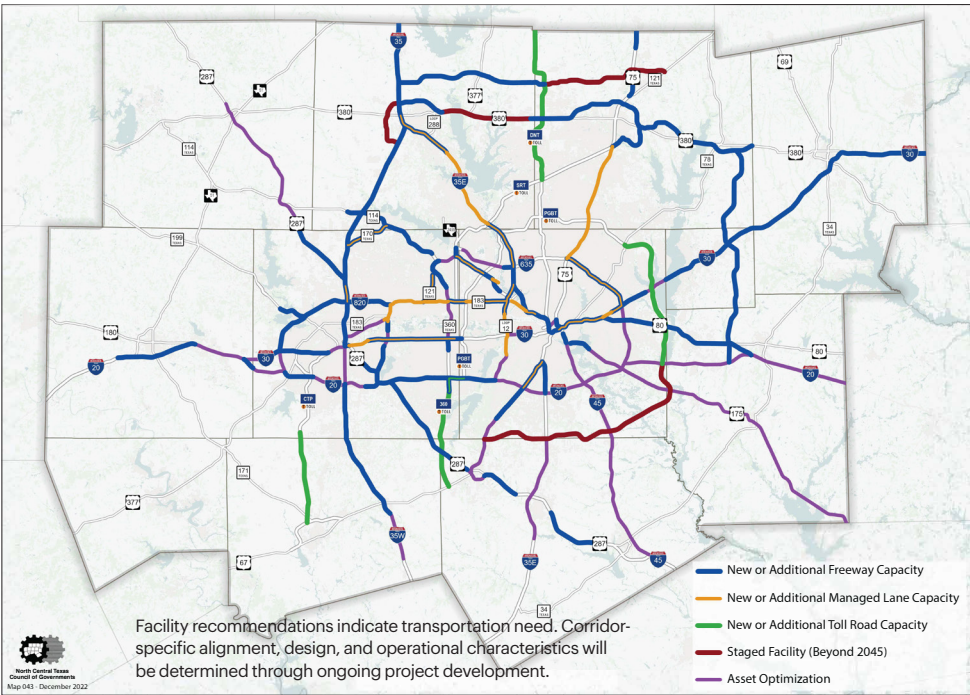
Mobility 2045 serves as a fiscally responsible blueprint for the region’s long-term multimodal transportation needs. The plan, adopted by the Regional Transportation Council in 2018 and updated in 2022, provides a range of transportation options to serve Dallas-Fort Worth now and into the future.

As the region grows from more than 7.9 million residents today to an estimated 11.3 million by 2045, it will require an integrated, easily navigable transportation system comprised of roads, public transportation, and bicycle and pedestrian facilities. Local policies and programs to enhance infrastructure investment will result in even more publicly accessible options. Mobility 2045 details transportation choices for the traveling public and for improving the quality of life in order to manage the region’s growth.

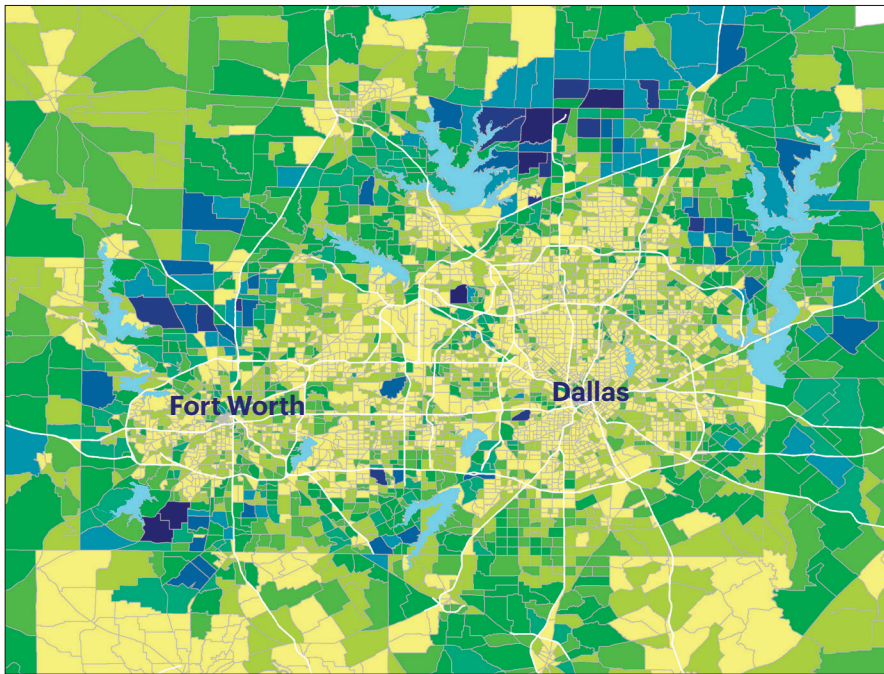
Funded Recommendations

Mobility 2045 represents a blueprint for the continued maintenance and development of the regional transportation system over the next 20 plus years. Mobility 2045 complies with all federal requirements related to the financial aspects of the metropolitan transportation plan. As the Dallas-Fort Worth region continues to grow, additional solutions will be imperative to comprehensively address the ever-increasing transportation needs.

Major Roadway Recommendations



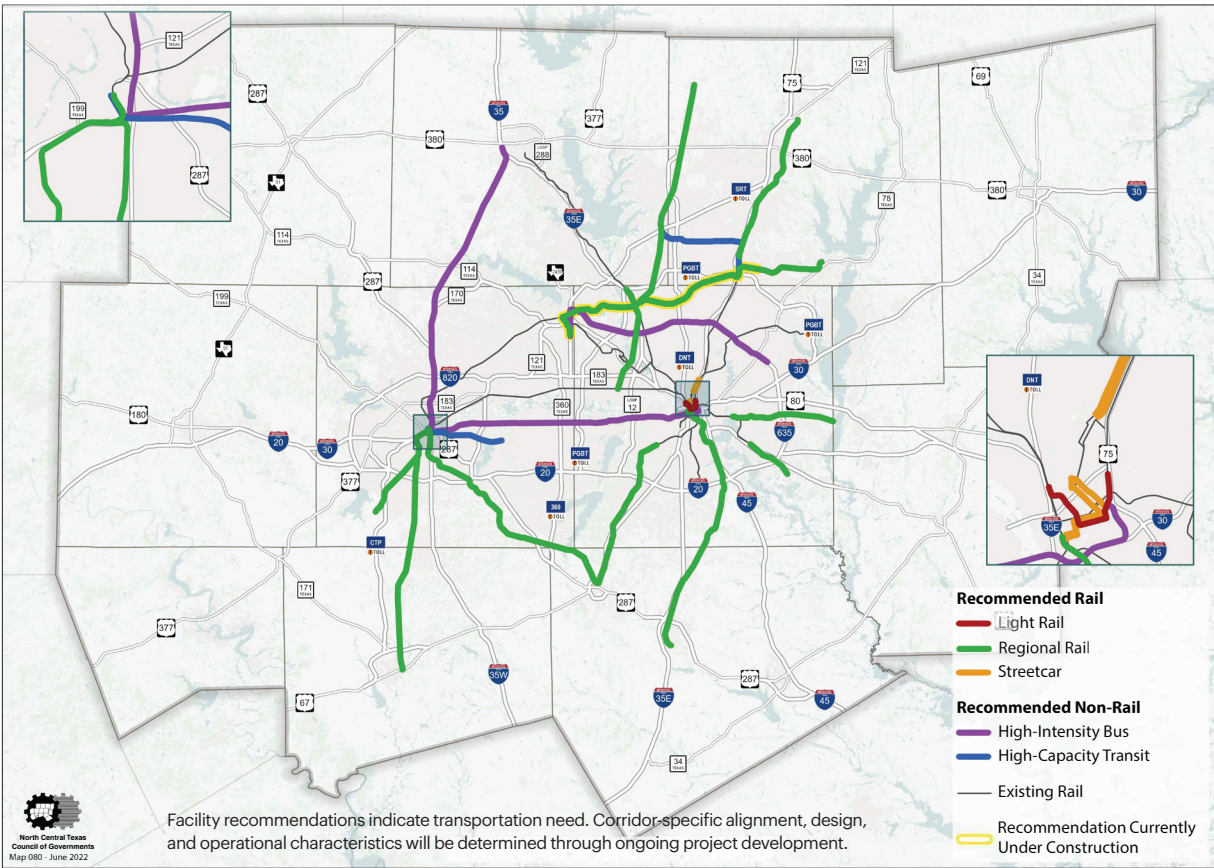
Population Growth Projections—2005-2045



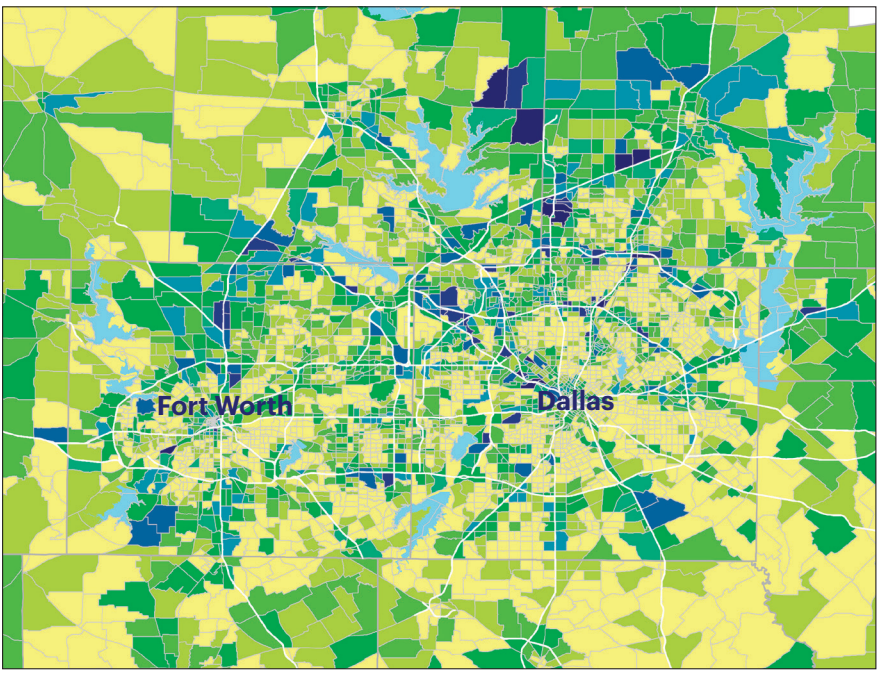
Projected 2005-2045 Population Growth

- 0-341
- 42-1,041
- 1,042-2,061
- 2,062-3,338
- 3,339-5,012
- 5,013-7,549
- 7,550-11,316
- 11,317-16,756
- 16,757-25,538
- 25,539-40,607

Major Transit Corridor Recommendations



Employment Growth Projections—2005-2045



Projected 2005-2045 Employment Growth

- 0-201
- 202-471
- 472-816
- 817-1,250
- 1,251-1,773
- 1,174-2,419
- 2,420-3,360
- 3,361-4,649
- 4,650-6,363
- 6,364-10,513

Source: North Central Texas Council of Governments