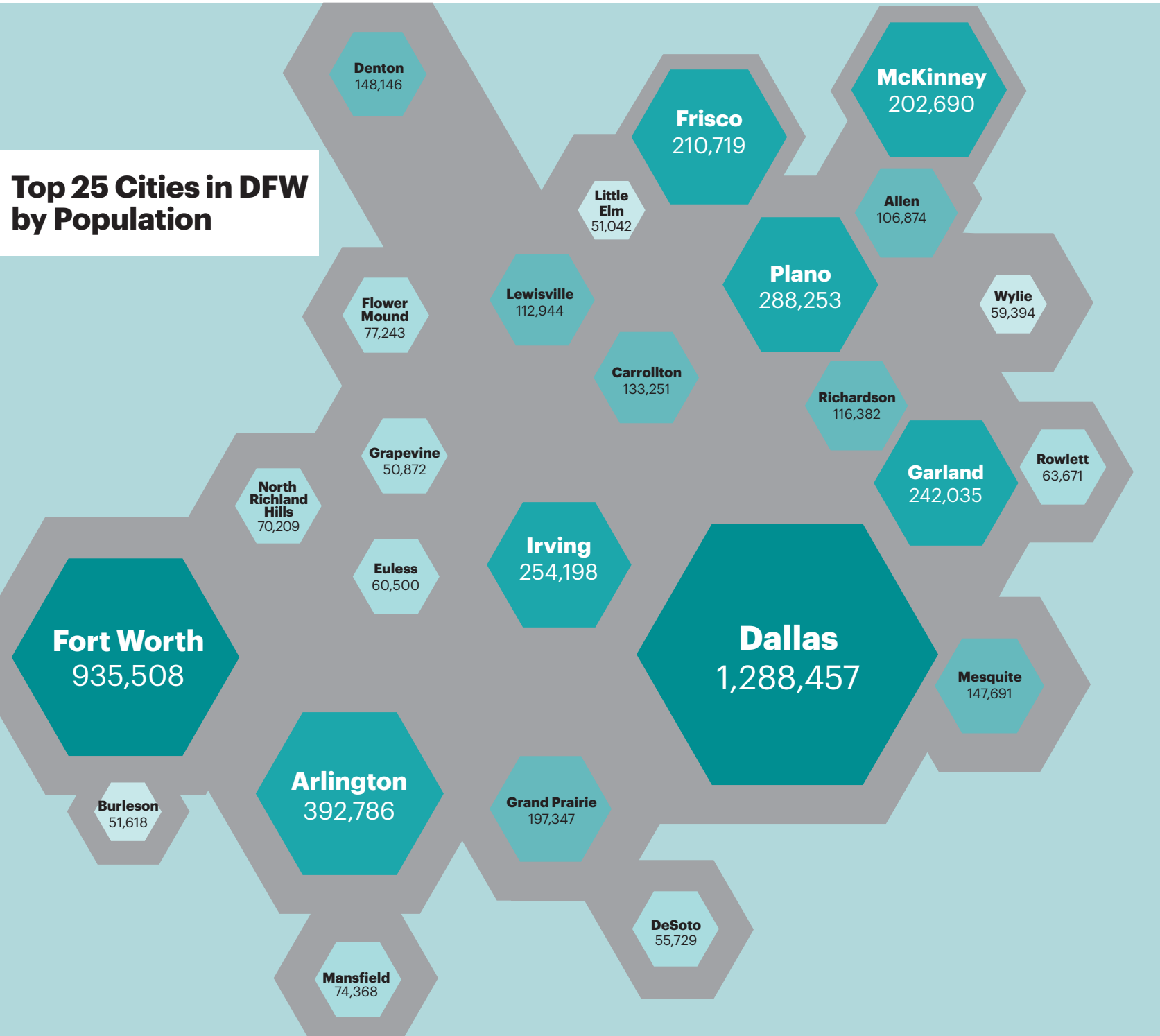


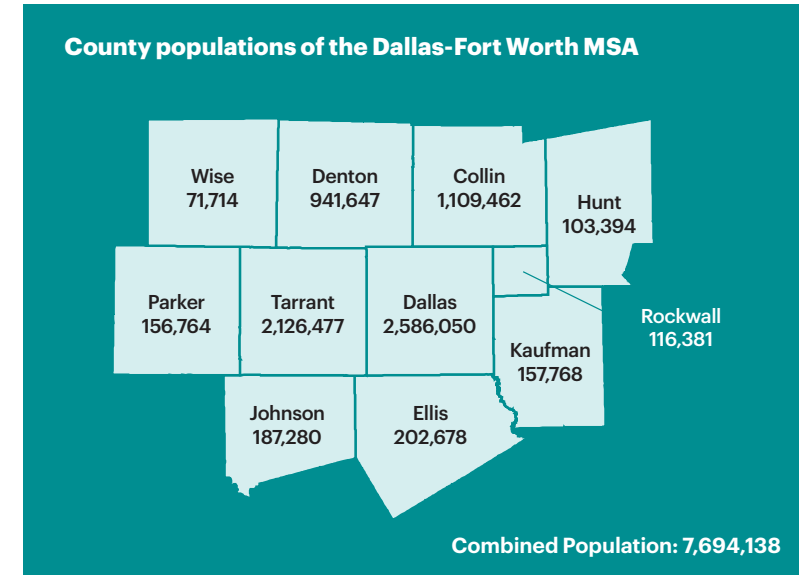
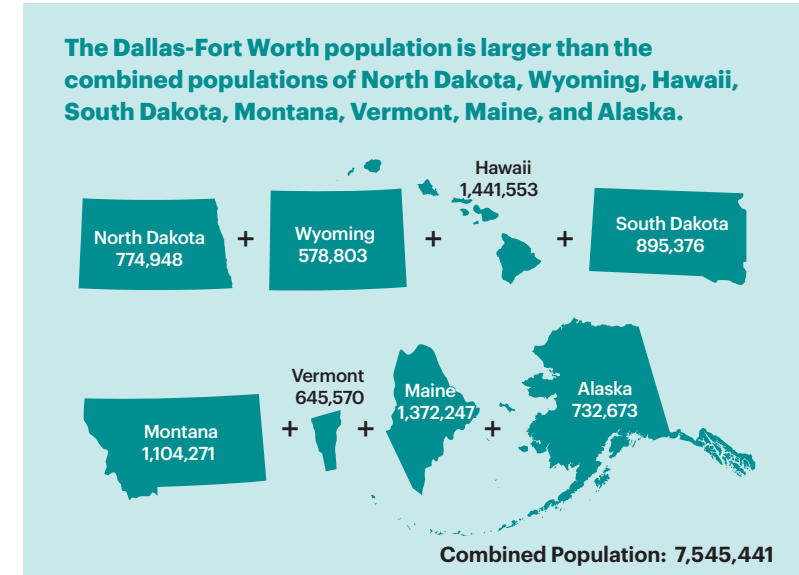
Regional Population

Dallas-Fort Worth consistently ranks among the nation's fastest-growing areas, and continuing job growth is a key factor. The population growth has, in turn, fueled real estate development as retailers and service providers expand to meet increasing demand.

Population and job growth have pushed Dallas and Fort Worth to redevelop and re-energize their central business districts, creating mixed-use buildings with residential, office, and retail space in high-end urban environments. While Dallas and Fort Worth represent the largest population centers, six suburbs—Arlington, Plano, Garland, Irving, Frisco, and McKinney—have populations exceeding 200,000. These municipalities offer an abundance of housing options for people to seek out the community that best fits their needs.



Dallas-Fort Worth By the Numbers



Ten Largest Metros in the U.S.

Metropolitan Statistical Area	2021 population	2020-2021 percent change
New York	19,768,458	-1.7%
Los Angeles	12,997,353	-1.4%
Chicago	9,509,934	-1.0%
Dallas-Fort Worth	7,759,615	1.3%
Houston	7,206,841	1.0%
Washington, DC	6,356,434	-0.5%
Philadelphia	6,228,601	-0.2%
Atlanta	6,144,050	0.7%
Miami	6,091,747	-0.6%
Phoenix	4,946,145	1.6%

Components of Population Change: July 1, 2020 to July 1, 2021

Metropolitan Statistical Area	Total Population Change	Population Change Percentage	Vital events			Net migration		
			Natural increase	Births	Deaths	Total	International	Domestic
Dallas-Fort Worth	97,290	1.3%	35,344	93,937	58,593	62,921	8,602	54,319
Phoenix	78,220	1.6%	8,142	53,798	45,656	70,097	3,247	66,850
Houston	69,094	1.0%	37,529	90,385	52,856	31,921	12,495	19,426
Atlanta	42,904	0.7%	17,798	68,252	50,454	25,049	5,691	19,358
Philadelphia	-13,382	-0.2%	-3,185	64,631	67,816	-10,623	4,140	-14,763
Washington, D.C.	-29,280	-0.5%	25,520	72,970	47,450	-54,211	12,600	-66,811
Miami	-34,694	-0.6%	-2,111	62,222	64,333	-32,541	22,764	-55,305
Chicago	-91,671	-1.0%	11,138	100,116	88,978	-102,613	4,284	-106,897
Los Angeles	-175,913	-1.3%	24,605	132,063	107,458	-199,539	5,237	-204,776
New York	-327,955	-1.6%	38,347	215,362	177,015	-361,774	23,681	-385,455

Source: US Census Bureau