



Photo by Motoki Tonn on Unsplash

# **VOLUNTEER NOW:** **COMBAT DOMESTIC VIOLENCE**

Learn how you can help fellow North Texans in their darkest time of need

---

*By: Cali Franks, Nicolle Ketcham, Alexis Swanzy, Gideon Sanders*

# TABLE OF CONTENTS

Domestic Violence Happens More Than You Know	<u>1</u>
Support Domestic Violence Quick View	<u>2</u>
Genesis Women’s Shelter & Support	<u>4</u>
Dallas CASA Court Appointed Special Advocate	<u>6</u>
Mosaic Family Services	<u>8</u>
The Family Place	<u>10</u>
Families To Freedom	<u>12</u>
Conclusion	<u>13</u>
References	<u>14</u>



# DOMESTIC VIOLENCE HAPPENS MORE THAN YOU KNOW

**20** people per minute are  
**PHYSICALLY ABUSED**  
by an **intimate partner**  
in the United States.

Domestic violence can be physical, sexual, emotional and financial. Unlike most other crimes, it usually is not a sudden, isolated incident but trauma that has become increasingly more severe over time.<sup>1</sup> This violence has a devastating impact on all involved—victims, witnessing children and the entire community. On average nearly 20 people per minute are physically abused by an intimate partner in the United States.<sup>2</sup> 1 in 4 women and nearly 1 in 10 men have experienced domestic violence.<sup>3</sup> Specifically, in 2018, the City of Dallas reported 15,425 domestic violence related offenses and 24 murders.<sup>4</sup>

In the light of COVID-19, Americans are required to stay home to protect themselves and their communities. COVID-19 has caused major economic devastation, disconnected many from community resources and support systems, and created widespread uncertainty and panic. These conditions create a perfect storm to stimulate violence in families where it didn't exist before and worsen situations in homes where mistreatment and violence have been a problem.<sup>5</sup> There are valid concerns that the numbers experiencing intimate partner violence will dramatically rise as a result of social distancing and quarantine during COVID-19. Before the pandemic, a survivor or victim could flee a violent situation or file a protective order with the police. Children are specifically vulnerable to abuse during COVID-19. Research shows that increased stress levels among parents are often a major predictor of physical abuse and neglect of children. Since children are not going to school, teachers and school counselors are unable to witness the signs of abuse and report to the proper authorities.<sup>6</sup> Stay-at-home orders can force victims to stay in a dangerous situation.<sup>7</sup>

Now more than ever, the victims of domestic violence need our help. On the following pages you will learn more about local organizations supporting the survivors of domestic violence and how you can help. The North Texas community needs us to come together to create meaningful change.

# HOW YOU CAN HELP

## QUICK VIEW

While the general public is aware that domestic violence exists, it is one of the issues that no one wants to talk about. We aim to remove that stigma by talking about it openly and supporting organizations that help survivors of domestic violence. The following pages highlight five of the leading domestic violence non-profit organizations in Dallas and how you can provide support to their efforts. Please be aware, some volunteer opportunities may be unavailable at this time due to COVID-19. Please contact the specific organization you are interested in volunteering with for more information.

ORGANIZATION	CATEGORY	ACTIVITY	GROUPS WELCOME	INDIVIDUALS WELCOME	SCHEDULED	FLEXIBLE SCHEDULE	REQUIRES TRAINING
Genesis	General Labor	Serve a Meal at a Shelter	✓	✓	✓		
Genesis	General Labor	Serve Dinner at the Outreach Office	✓	✓	✓		
Genesis	Arts & Crafts	Create a Birthday Kit for a Genesis Client	✓	✓		✓	
Genesis	Legal	Monitor Protective Order Court	✓	✓		✓	✓
Genesis	General Labor	Help Genesis Staff with Annual Event	✓	✓	✓		
Genesis	Childcare	Provide Childcare at the Outreach Office		✓		✓	
Genesis	Childcare	Children's Department Weeknight Pal		✓	✓		✓
Genesis	General Labor	Benefit Thrift Store Assistant	✓	✓	✓		
Genesis	Legal	Court Partnership		✓	✓		✓
Genesis	Fundraising	Host a Fundraiser	✓	✓		✓	
Genesis	Young Professional Programs	Genesis Young Leaders	✓	✓	✓		
Genesis	Womens Organization	Genesis Alliance		✓		✓	✓
Genesis	Mens Organization	Genesis HeROs	✓	✓	✓		✓
Genesis	Outreach	STAR	✓	✓	✓		✓
Genesis	Translation Services	Madrina		✓	✓		✓
Genesis	Corporate	Corporate Heroes	✓	✓	✓		
Dallas CASA	Advocate	Become a Volunteer Advocate		✓		✓	✓
Dallas CASA	Fundraising	Join the Children's Council		✓	✓		✓
Dallas CASA	Young Professional Programs	Join Young Professionals		✓	✓		✓



# PASSION LED US HERE

Photo by Ian Schneider on Unsplash

ORGANIZATION	CATEGORY	ACTIVITY	GROUPS WELCOME	INDIVIDUALS WELCOME	SCHEDULED	FLEXIBLE SCHEDULE	REQUIRES TRAINING
Mosaic	Social Media	Become a Social Media Ambassador		✓		✓	✓
Mosaic	Translation Services	Translation Services		✓	✓		✓
Mosaic	Virtual Activities	Virtual Activities	✓	✓		✓	
Mosaic	Administrative Assistance	Administrative Assistance		✓		✓	✓
Mosaic	Legal	Pro Bono Services		✓	✓		✓
The Family Place	Administrative Assistance	Administrative Help		✓		✓	✓
The Family Place	Fundraising	Partners Card	✓	✓	✓	✓	
The Family Place	Fundraising	Fundraising and Event Planning	✓	✓	✓		
The Family Place	General Labor	Resale Shop and Boutique	✓	✓		✓	
The Family Place	Special Events	Special Events	✓	✓	✓		
The Family Place	Childcare	Child Development Center	✓	✓	✓		✓
The Family Place	Legal	Court Partnership		✓	✓		✓
The Family Place	Supervised Visitation	FLP Family Center		✓	✓		✓
The Family Place	Administrative Assistance	Shelter		✓	✓		✓
The Family Place	Speaking Events	Speakers Bureau		✓	✓		✓
The Family Place	Administrative Assistance	Hotline		✓	✓		✓
The Family Place	Young Professional Programs	Young Partners	✓	✓	✓		✓
Families to Freedom	Vehicle Services	Volunteer Driver		✓	✓	✓	✓
Families to Freedom	General Labor	Donation Pickup		✓	✓	✓	✓
Families to Freedom	General Labor	Car Seat Cleaning	✓	✓	✓	✓	✓
Families to Freedom	Vehicle Services	Vehicle Mechanic	✓	✓	✓	✓	✓
Families to Freedom	Vehicle Services	Fleet Management	✓	✓	✓	✓	✓

# GENESIS WOMEN'S SHELTER & SUPPORT

## VOLUNTEER CONTACT

Lottie Price: (214) 389-7701 or [lprice@genesishshelter.org](mailto:lprice@genesishshelter.org)

## WHY GENESIS?

Since 1984 Genesis Women's Shelter & Support has provided a strong network of support services for women and children of domestic violence in North Texas. For the capacity at which they operate, they need as many volunteers as possible to help survivors from the increase in domestic violence cases that we've seen during COVID-19. They address the issue of domestic violence holistically, working to solve this problem at the core.

## MISSION

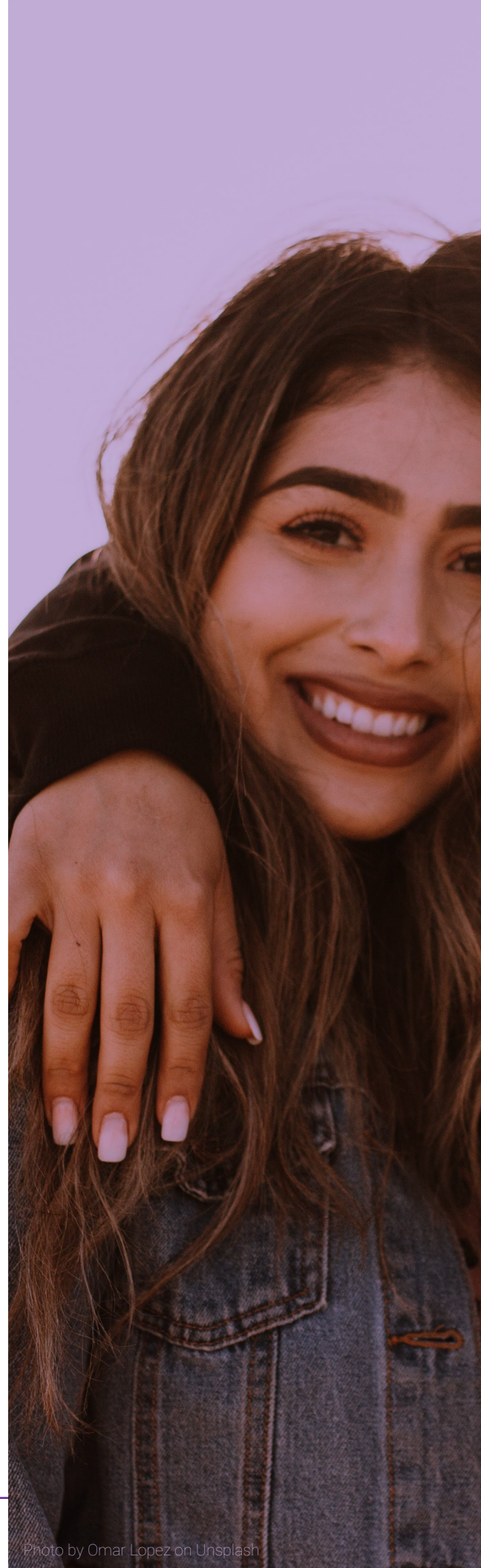
To provide safety, shelter, and support for women who have experienced domestic violence, and to raise awareness regarding its causes, prevalence, and impact.

## ABOUT THE ORGANIZATION

Genesis Women's Shelter & Support exists to help women and children live abuse-free lives. From their emergency shelter, to their counseling services, they have geared their services to provide women with the help and guidance they need most.

## SUPPORT SERVICES AVAILABLE

- Education on [Domestic Violence, How to Spot It, How to Help](#)
- Emergency Shelter
- Transitional Housing
- Counseling Services
- 24/7 Hotline: (214) 946-HELP (4357)
- Legal Services







## GET INVOLVED

- **Serve a Meal at the Shelter**
- **Serve Dinner at the Outreach Office**
- **Create a Birthday Kit for a Genesis Client:** Create birthday kit(s) by yourself or as a group, and then schedule a drop-off. Due to the popularity of this activity, please contact their volunteer manager in advance to see if birthday kits are needed.
- **Help Genesis Staff with Annual Events**
- **Provide childcare at the outreach office**
- **Children's Department Weeknight Pal:** There are volunteer opportunities available Monday – Thursday from 9AM – 9PM. 90-minute orientation required. Weekly or bi-monthly commitment preferred.
- **Benefit Thrift Store Assistant:** Help the staff at our thrift store receive, sort, tag and display donated items. Individual volunteer hours are available Monday – Friday from 10AM – 5:30PM. Groups of 10 or more may come on Wednesdays from 10AM – 1PM and must be coordinated with Genesis.
- **Court Partnership:** Help monitor the proceedings in Dallas County Protective Order Court any Monday – Wednesday 9AM – 4PM. 1-hour orientation and courthouse training required.
- **Shop at the Genesis Benefit Thrift Store**

### Additional Support Opportunities

- Become an ambassador for change through one of their professional service organizations: Genesis Alliance, Genesis Young Leaders, Genesis HeROs, STAR or Madrina.
- Provide corporate support through a Lunch & Learn, sponsorship of a Genesis event, secure a corporate grant or volunteer as an organization. For information, contact Julia Palmer, Director of Corporate and Foundation Relations: [jpalmer@gensissshelter.org](mailto:jpalmer@gensissshelter.org) or 214-389-7719.

## DONATE

- Host a [Fundraising Page](#)
- [Amazon Wish List](#)
- [Monthly Monetary Donations](#)
- [Give Items:](#) Due to COVID-19, they are only accepting special in-kind donations. Currently accepting: healthcare items, food (not within one month of expiration date), cleaning items & toiletries, baby care items, paper goods, and clothing. To schedule your donation, contact Mackenzie Duncan, In-Kind Donations Coordinator: [mduncan@gensissshelter.org](mailto:mduncan@gensissshelter.org) or 214-389-7775.

GET STARTED





# DALLAS CASA COURT APPOINTED SPECIAL ADVOCATES

## **VOLUNTEER CONTACT**

(214) 827-8973 or visit [dallascasa.org](http://dallascasa.org)

## **WHY DALLAS CASA?**

Children are heavily impacted by domestic violence situations. Because the violence is often inflicted by a parent, Dallas Casa ensures they have an advocate in their corner.

## **MISSION**

Dallas CASA advocates in the community and the courtroom for children in the protective care of the state so they can grow up in safe, permanent homes where they can thrive.

## **ABOUT THE ORGANIZATION**

CASA stands for Court-Appointed Special Advocates. The courts appoint CASA volunteers to gather information and make recommendations to help judges decide what is best for each child. CASA volunteers advocate for the best interests of abused and neglected children, helping these children gain safe, permanent homes as quickly as possible. Dallas CASA exists so that abused and neglected children in protective care have the chance to become successful adults. With the help of caring advocates, the cycle of abuse and neglect will be broken.

Last year, more than 1,500 volunteers served more than 3,600 children in Dallas County.

## **SUPPORT SERVICES AVAILABLE**

CASA volunteers get to know the children, review records, research information and talk to everyone involved in a child's life — social workers, attorneys, judges, parents, teachers and family members. The volunteers then make recommendations to the court that help judges decide the best permanent home for the children.







## GET INVOLVED

- **Volunteer Advocate:** you will be teamed with a CASA staff supervisor who will provide support and guidance to volunteers throughout their cases and are always present during court hearings.
- **Requirements to apply:** Attend a 1-hour information session to learn more about the requirements. [Register for one of the upcoming virtual sessions](#)  
After attending the information session, submit an application (distributed at the information sessions), which will include a background check. CASA will email you for an informal interview.
- **Training:** CASA volunteers undergo 30 hours of initial training and 12 hours of continuing education each year. After your training, you will be sworn in by a judge as a Volunteer Advocate.

## TIME COMMITMENT

After training, the time commitment can range between 15 – 30 hours a month. Most of this time can be spent in the evenings or on weekends, but there are approximately 8 to 10 court hearings per year, as well as phone calls and occasional meetings during working hours. To share the volunteer responsibilities, some volunteers partner with a friend, a spouse, or other relative who is also a volunteer advocate.

### Additional Support Opportunities

- **[The Children's Council:](#)** The Children's Council raises funds through special events and promotes community awareness about the needs of the Children Dallas CASA serves and the transformational effect a loving, dedicated CASA volunteer advocate has on these children's lives.
- **[Young Professionals:](#)** The mission of the Young Professionals is to increase awareness for Dallas CASA, while providing charitable and social opportunities for individuals ages 21 – 40 years. Membership allows you the opportunity to serve on the Young Professionals Council and invitations to all Dallas CASA Young Professionals Events. Annual membership dues are \$50.

## DONATE

- Host a CASA Gift Card Drive: Dallas CASA suggests \$25 gift cards from Target, Walmart, restaurants, movies, bookstores, or sporting events for volunteers to use during visits with the children.
- Corporate Matching Gifts
- [Annual Fund](#)
- [Monetary Donation](#)

GET STARTED





# MOSAIC FAMILY SERVICES

## VOLUNTEER CONTACT

(214) 821-5393 ext. 275 or [development@mosaicservices.org](mailto:development@mosaicservices.org)

## IN-KIND DONATION CONTACT

Debbie Mahase: (214) 821-5393 ext 263 or [debbiem@mosaicservices.org](mailto:debbiem@mosaicservices.org)

## WHY MOSAIC?

In addition to supporting survivors of domestic violence, Mosaic also helps survivors of human trafficking and provides services to refugees and immigrants. Refugees and immigrants often have limitations receiving other services due to language barriers and fears of deportation.

## MISSION

To support, educate, and empower individuals and families. Specifically, Mosaic is a safe haven for survivors of human rights abuses, which includes human trafficking and domestic violence.

## ABOUT THE ORGANIZATION

Mosaic Family Services is a nonprofit, community based organization that provides culturally and linguistically competent services to refugees and immigrants in crisis.

## SUPPORT SERVICES AVAILABLE

- Case management
- Counseling
- Legal representation
- Children's advocacy
- 24-hour assistance
- Emergency safe shelter
- Transitional housing
- Interpretation (26 languages)
- Public speaking to raise awareness



MOSAIC  
FAMILY SERVICES

[mosaicservices.org](http://mosaicservices.org)





## GET INVOLVED

- **Connect on social media:** Follow, share and like @MosaicFamilyServices on Facebook, @mosaicfreedom on Instagram, and @mosaicfreedom on Twitter.
- **Social Media Ambassador:** Write blog posts, help to find current events for content, and utilize your graphic design skills for Mosaic's social media posts.
- **Dallas Media Outreach**
- **Translation Services**
- **Virtual Activities:** Lead a virtual workout or self care class (i.e., yoga, meditation, aerobics), read a child a book, lead a virtual activity for kids (i.e., craft projects), or sew masks for our clients.
- **Administration Assistance**
- **Pro Bono Services:** Attorney services in family law or immigration law.

## DONATE

- [Monetary donation \(one time or monthly\)](#)
- Impact gift: purchasing a grocery shopping list for a family (\$25), a one time counseling and play therapy session for a child who has experienced trauma (\$50), provide survivors with an attorney who will ensure their stories are heard and their rights are recognized (\$100), allow a child to attend a twelve-week summer camp (\$250), provide case management and health care advocacy for a refugee family (\$500), and/or sponsor an entire family for one month at Mosaic (\$1,000).
- [In-kind donations](#), which include grocery, hygiene and household products
- [Amazon wish list](#)
- [Transition housing Amazon wish list](#)

GET STARTED





# THE FAMILY PLACE

## VOLUNTEER CONTACT

Meg Bittner: (214) 443-7714

## WHY THE FAMILY PLACE?

As the largest family violence service provider in North Texas, The Family Place needs a tremendous amount of volunteers and donations to support survivors of domestic violence. What makes them unique is that they also provide services for men, which can often be forgotten when talking about victims of domestic violence.

## MISSION

Empower victims of family violence by providing safe housing, counseling and skills that create independence while building community engagement and advocating for social change to stop family violence.

## ABOUT THE ORGANIZATION

The Family Place is the largest family violence service provider in North Texas, with three emergency shelters providing 177 shelter beds each night, including the state's only shelter for men and children. They served 13,016 clients with 169,672 hours of service last year alone. Over the past 41 years, they have counseled more than 216,500 clients, provided lifesaving shelter to more than 25,000 women, men, and children, and answered more than 615,000 calls for help. All of their programs are provided in Spanish and English.

## SUPPORT SERVICES AVAILABLE

- 24 Hour Crisis Hotline: (214) 941-1991
- Emergency Shelter
- Crisis counseling for adults and children
- Medical and dental care
- Job, technical, and life skills training for adults
- Animal shelter for dogs and cats
- Transitional housing
- Children's educational services
- Incest Recovery Program
- Supervised Child Visitation
- Battering Intervention & Prevention Program
- Legal Services
- Community Education
- Resale Services



[familyplace.org](http://familyplace.org)







## GET INVOLVED

- **Administrative Assistance**
- **Partners Card:** A seasonal fundraiser, selling cards, inputting donor records, and processing sales receipts.
- **Fundraising and Event Planning**
- **Resale Shop and Boutique:** support sales or donation sorting.
- **Special Events:** Sponsors provide a celebration, a game day, carnival or any other event in your imagination .
- **Child Development Center:** Help with special events, in the reception area, as teaching assistants and in the After School Program.
- **Court Partnership:** Monitor and record the judicial process in the Protective Order Courts at the Frank Crowley Court House. Information gathered is reported back to the community and courts to create awareness.
- **FLP Family Center:** Support supervised visitations and exchanges on the first, third, and fifth weekend of the month.
- **Shelter:** Work at the front desk to support the operations and security of the Safe Campus.
- **Speakers Bureau:** Represent The Family Place at Volunteer and Health Fairs, as well as speaking engagements.
- **Answer hotline calls with a The Family Place staff member to help victims of family violence find safety and shelter.**
- [Adopt a Family](#) for the holidays
- [Corporate Engagement:](#) Leverage the network and reach of your company through event sponsorship, donation matching, grant donations, and hosting information sessions
- **Young Partners (on hold due to COVID-19):** A social and service group for young professionals providing community education and volunteer services to empower victims of family violence.

## DONATE

- [Monetary donations](#)
- [Donate Supplies/Items](#)
- [Amazon Wish List](#)

## TIME COMMITMENT

Most of the opportunities for service are on hold as a result of COVID-19. However, once regular operations resume, the opportunities for involvement are numerous. The time commitment for many of these service avenues vary widely, but are largely based on the individual's willingness and availability. Many of the more involved volunteer opportunities require an orientation to be completed.

GET STARTED



# FAMILIES TO FREEDOM

## VOLUNTEER CONTACT

(972) 885-7020 or [volunteer@FamiliestoFreedom.org](mailto:volunteer@FamiliestoFreedom.org)

## WHY FAMILIES TO FREEDOM

One of the most important steps of stopping domestic violence is moving the survivors to safety. This can become challenging when shelters are at capacity and the survivors have nowhere else to turn. Families to Freedom allows them the opportunity to make it to a safe location. Because this is such an important step to halting the immediate abuse, Families to Freedom has been included in this list of organizations that need your support.

## MISSION

To transport victims of domestic abuse to safety.

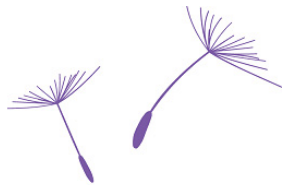
## ABOUT THE ORGANIZATION

According to the 2018 National Network to End Domestic Violence reports, over 950 requests for help from victims go unmet every single day in Texas. Most shelters within Dallas remain near 100% capacity, leaving hundreds of victims with nowhere to turn. However, Families to Freedom realized they could provide some hope by identifying shelters or places of refuge that these families might otherwise not have transportation to.

Families to Freedom currently serves survivors leaving from the North Texas area with plans to expand across the entire state and beyond.

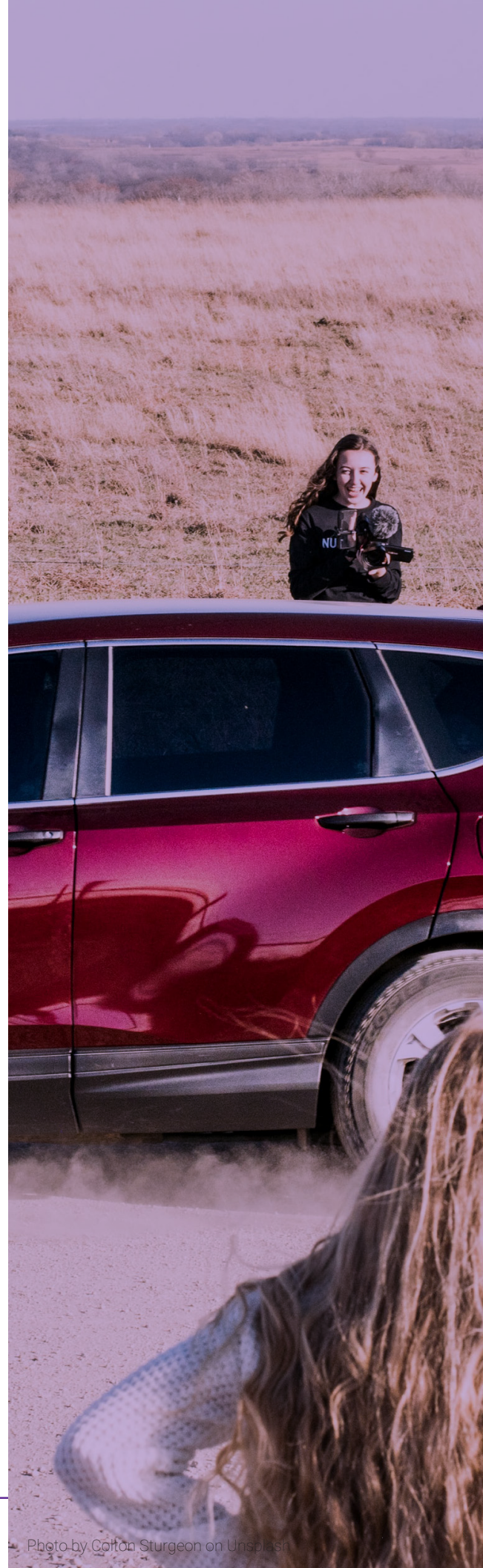
## SUPPORT SERVICES AVAILABLE

- Ride to domestic violence shelters in North Texas
- Road trip to a family home in another state
- Fuel card to leave the area
- Bus or train pass to a family home far away
- Shelter location assistance



# FAMILIES *to* FREEDOM

[familiestofreedom.org](http://familiestofreedom.org)







## GET INVOLVED

- **Volunteer Driver:** Families to Freedom provides the vehicle, fuel, food and other travel costs (or use your vehicle). Some trips are 20 minutes of driving with a client while others may last 2+ days to arrive. You can assign yourself for how far and how long to drive!
- **Donation Pick Up**
- **Car Seat Cleaning**
- **Vehicle Mechanic**
- **Fleet Management**
- **Connect on Social Media:** Follow, share and like @FamiliestoFreedom on Facebook, @Familiestofreedom on Instagram, and @Wish4Freedom on Twitter.

## DONATE

- [Donate Funds for Travel](#)
- [Donate Your Vehicle](#)
- [Amazon Wish List](#)

## TIME COMMITMENT

A 90-minute orientation is required to ensure this is a good fit for your schedule and interest. Training and onboarding takes 1 – 3 hours (depending on volunteer role) conducted in their office.

GET STARTED







# MAKE A DIFFERENCE IN SOMEONE'S LIFE

Currently, young professionals are part of a generation that is starting to inherit a world riddled with issues like domestic violence. However, through awareness, education, and participating in organizations, like the ones mentioned above, created to aid in addressing the symptoms of domestic violence, you will make a world of difference for the survivors.

In addition to donating financially or your valuable time to an organization, check on your friends and family. Domestic violence penetrates all cultures, socioeconomic statuses, and ages. Abusers do not abuse every person they come into contact with, so make sure to actively listen to your friends and family, ask the uncomfortable questions, and do not express disbelief to the survivor simply because the alleged abuser is “nice” to you.

Through your awareness and participation, you will help the North Texas community recognize and shed light on the results of domestic violence. Additionally, through your participation, you will help the need to provide services to the survivors. That, in turn, may allow us as a community to continue to address, and even focus on addressing, the causes and/or triggering events of domestic violence through education around mental health, financial stability, substance abuse, and anger management.

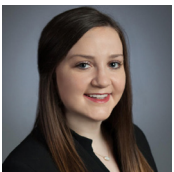


# REFERENCES

1. Intimate Partner Violence and Child Abuse Considerations During COVID-19, Substance Abuse and Mental Health Services Administration, <https://www.samhsa.gov/sites/default/files/social-distancing-domestic-violence.pdf>
2. Texas Council on Family Violence
3. The National Domestic Violence Hotline
4. Dallas Police Department Family Violence Unit Crime Report
5. How COVID-19 May Increase Domestic Violence and Child Abuse, American Psychological Association, <https://www.apa.org/topics/covid-19/domestic-violence-child-abuse>.
6. Intimate Partner Violence and Child Abuse Considerations During COVID-19, Substance Abuse and Mental Health Services Administration, <https://www.samhsa.gov/sites/default/files/social-distancing-domestic-violence.pdf>
7. Intimate Partner Violence and Child Abuse Considerations During COVID-19, Substance Abuse and Mental Health Services Administration, <https://www.samhsa.gov/sites/default/files/social-distancing-domestic-violence.pdf>

## PREPARED BY:

Dallas Regional Chamber  
LEAD YP Class of 2020



**CALI FRANKS**  
cali.franks@yahoo.com  
[LinkedIn](#)



**NICOLLE KETCHAM**  
nicolle.ketcham@gmail.com  
[LinkedIn](#)



**ALEXIS SWANZY**  
aswanzy@kesslercollins.com  
[LinkedIn](#)



**GIDEON SANDERS**  
gideonsanders@ymail.com  
[LinkedIn](#)