

POPULATION DENSITY AND GROWTH

While the majority of the population growth from 2000 to 2010 occurred in the suburbs, urban cores and first-ring suburbs continued to attract residents to well-established neighborhoods. According to the North Texas Council of Governments [NCTCOG], the regional population is projected to hit 11.2 million by 2045.

The heat maps shown here represent current population and employment densities, which can be contrasted with NCTCOG-generated maps on the opposite page presenting projections through 2040. NCTCOG maps are compiled by Traffic Survey Zone [TSZ], an aggregate of census blocks.

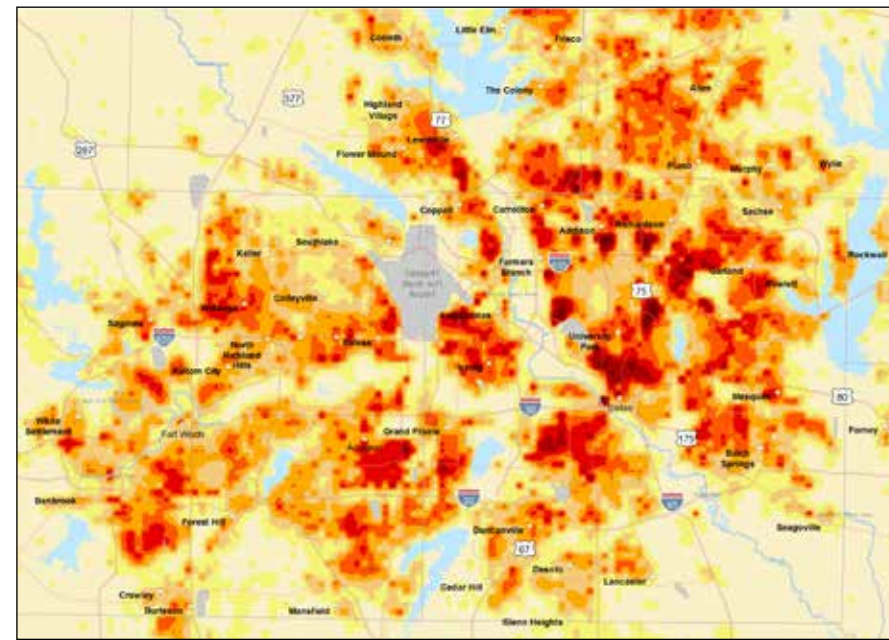
Forecast estimates are produced by NCTCOG and are the result of a combination of efforts. The first of these is an objective, deterministic model that uses factors such as inventory of vacant land and accessibility to allocate given levels of households and employment.

The second is a subjective local review process whereby local entities are given an opportunity to review the model outputs and suggest adjustments. For this, local reviewers use their own expertise, experience, and knowledge along with substantiating information such as adopted comprehensive plans and known development activity.

It is important to note that both the objective and the subjective processes represent possible outcomes of future development activity. NCTCOG staff assess input submitted by local reviewers along with other data tracked by NCTCOG to complete the forecast estimates.

These data were developed for regional planning activities and have not been evaluated for other uses. NCTCOG makes no warranty, express or implied, including warranties of merchantability and fitness for a particular purpose. Responsibility for the use of these data lies solely with the user.

DFW TOTAL POPULATION DENSITY

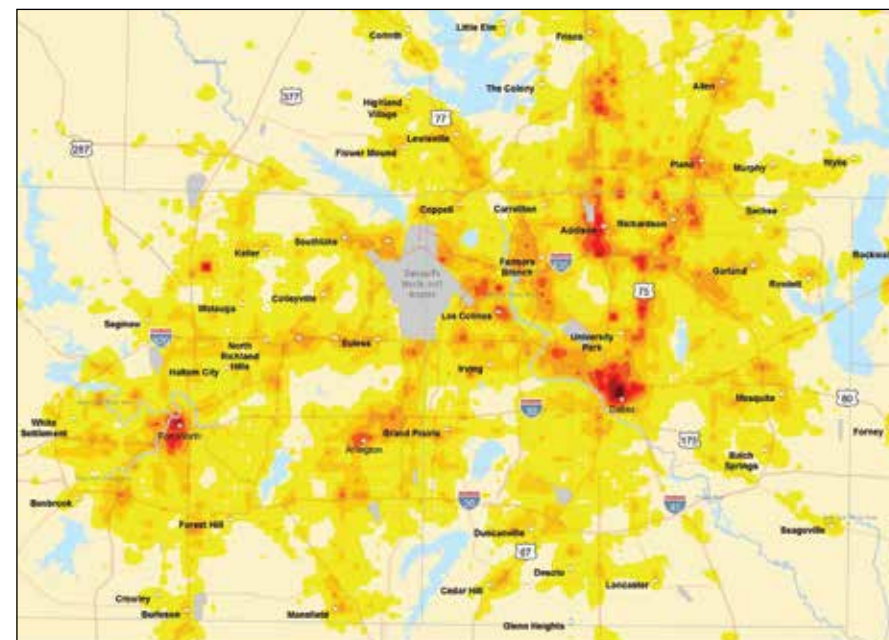


SOURCE: JLL

TOTAL POPULATION PER SQ 1/4 MILE



DFW TOTAL EMPLOYMENT DENSITY

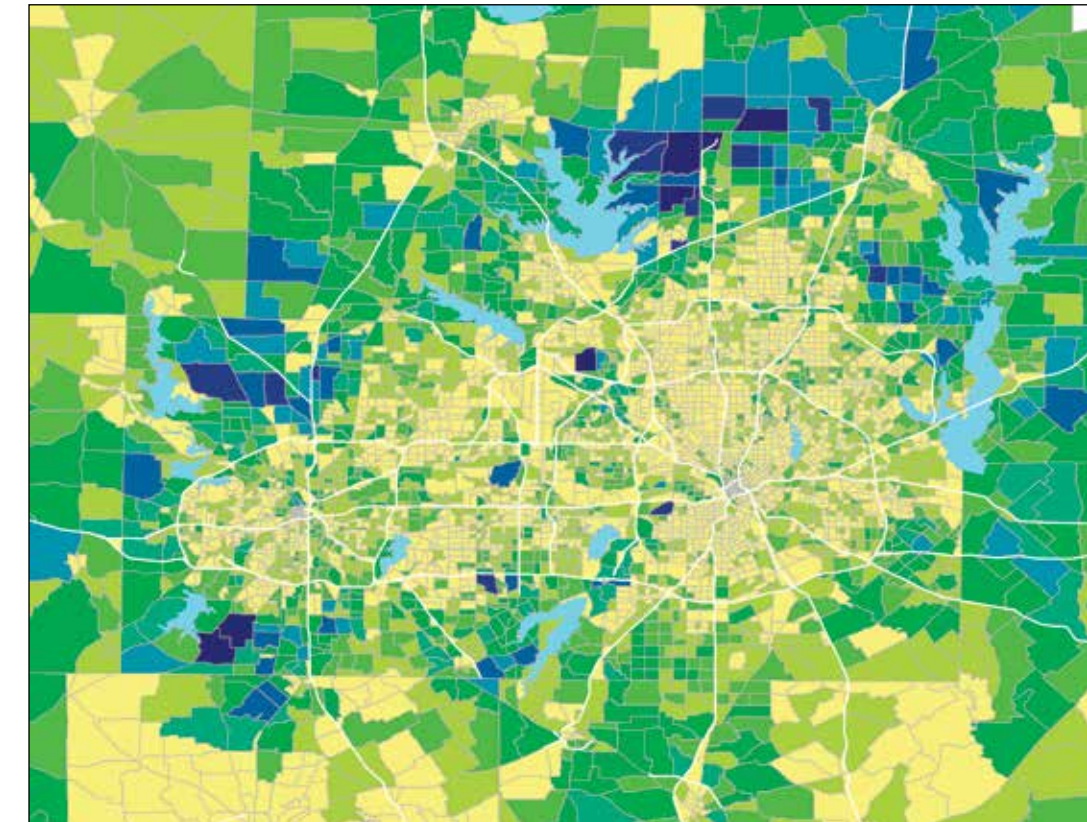


SOURCE: JLL

TOTAL EMPLOYEE COUNT PER SQ 1/4 MILE

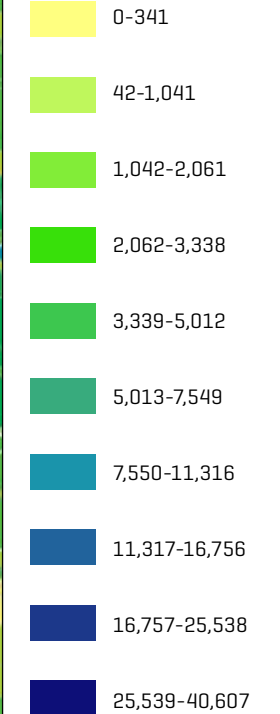


2005-2045 POPULATION GROWTH PROJECTIONS

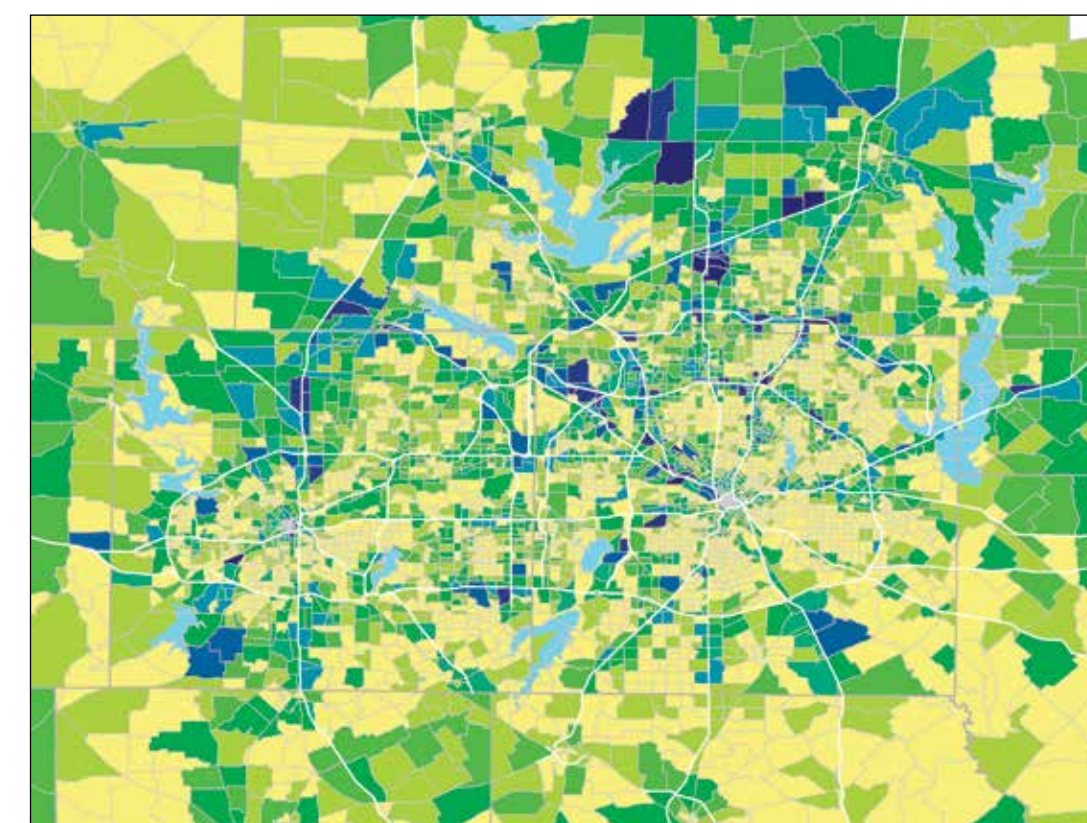


SOURCE: North Texas Central Texas Council of Governments

PROJECTED 2005-2045 POPULATION GROWTH



2005-2045 EMPLOYMENT GROWTH PROJECTIONS



SOURCE: North Central Texas Council of Governments

PROJECTED 2005-2045 EMPLOYMENT GROWTH

