

# LIFE SCIENCES

More than 1,000 firms employing some 26,000 people make up the life sciences industry in the Dallas-Fort Worth region. DFW's life sciences industry is dominated by pharmaceutical and medicine manufacturers, such as Alcon (Fort Worth) and Essilor of America (Dallas). Medical equipment and supplies, as well as scientific research and development innovation, are hallmarks of DFW's life sciences industry. UT Southwestern Medical Center in Dallas is among the nation's best in biology and biochemistry research, boasting countless clinical breakthroughs and innovations.

## CORE STRENGTHS

### BRAIN RESEARCH, NEUROLOGY AND NEUROSURGERY

- > Seven institutes and centers are focused on brain research in DFW.
- > Baylor Scott & White and UT Southwestern ranked High Performing and 38th, respectively, in neurology and neurosurgery (2017 U.S. News & World Report).

### CANCER RESEARCH

- > Cancer Prevention & Research Institute of Texas (CPRIT) has awarded \$368M to DFW institutions since 2009 to spur cancer research innovation and commercialization and to increase access to prevention programs and services.
- > UT Southwestern Medical Center is leading a Texas consortium of researchers to establish the country's first National Center for Heavy Ion Radiation Therapy by 2021. The facility could provide clinical care and research using heavy particles for innovative new cancer treatments.
- > The Texas Center for Proton Therapy opened in Irving in 2016 joining only 37 existing or planned centers across the U.S.
- > Mary Crowley Cancer Research Center located at Medical City Dallas Hospital is one of the world's largest gene therapy investigative facilities.
- > UT Southwestern's Harold C. Simmons Cancer Center earned a National Cancer Institute (NCI) designation, which is bestowed upon top-tier cancer centers nationwide.
- > Baylor University Medical Center's T. Boone Pickens Cancer Hospital is the first dedicated cancer hospital in North Texas and the second in the state.

### CHILDREN'S CARE

- > Texas Scottish Rite Hospital Spinal System manufactured and marketed by Medtronic is the most widely used implant system in the world for spinal deformity.
- > Children's Medical Center Dallas is one of only 14 national pediatric research centers sanctioned by the National Institutes of Health.
- > Children's Medical Center Dallas-Texas Scottish Rite Hospital ranked 5th in the country for Pediatric Orthopedics and 13th for Cardiology & Heart Surgery (2017 U.S. News and World Report).

### DENTAL RESEARCH

- > Texas A&M's Baylor College of Dentistry (TAMBCD) is a nationally recognized center for oral health sciences education, research, specialized patient care, and continuing dental education.

### WELLNESS

- > The Cooper Institute and Clinic Longitudinal Study is one of the most highly referenced databases on physical fitness and health in the world.

### UT SOUTHWESTERN

- > UT Southwestern Medical Center ranks among the top academic medical centers in the world, training nearly 4,600 students, residents, and postdoctoral fellows each year.
- > UT Southwestern claims five Nobel Prize recipients, 20 members of the National Academy of Sciences; and has received over \$1 billion in National Institutes of Health (NIH) funding since 2007.

### REGIONAL PARTNERSHIPS

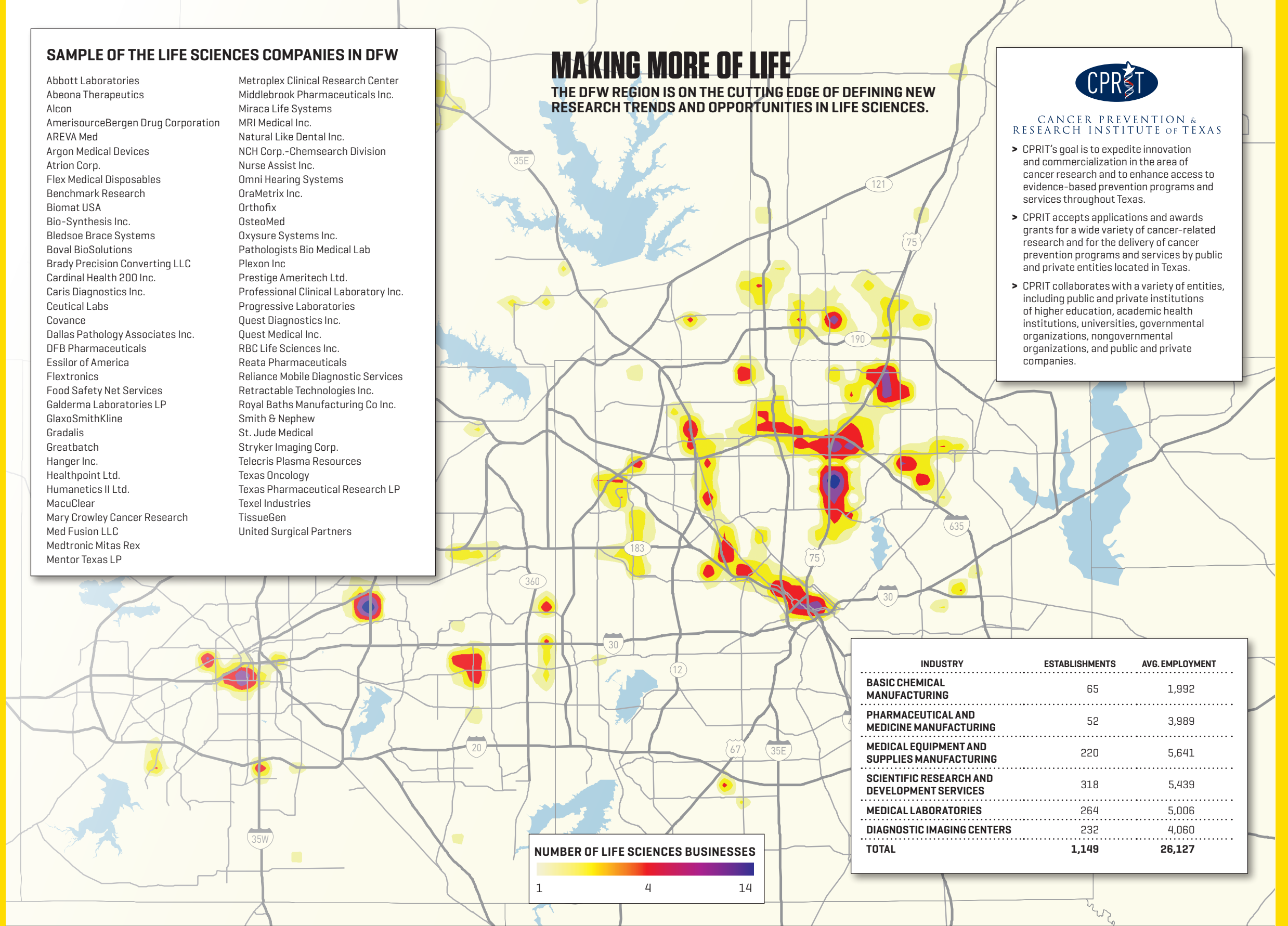
- > Major participants/competitors in the sector collaborate in many ways including the DFW Hospital Council, Health Industry Council, Dallas Medical Resources, and Teaching Hospital Forum.
- > The North Texas Accountable Healthcare Partnership (NTAHP), designated as the regional health information exchange (HIE) entity is located in Arlington.

## SAMPLE OF THE LIFE SCIENCES COMPANIES IN DFW

- |                                    |                                       |
|------------------------------------|---------------------------------------|
| Abbott Laboratories                | Metroplex Clinical Research Center    |
| Abeona Therapeutics                | Middlebrook Pharmaceuticals Inc.      |
| Alcon                              | Miraca Life Systems                   |
| AmerisourceBergen Drug Corporation | MRI Medical Inc.                      |
| AREVA Med                          | Natural Like Dental Inc.              |
| Argon Medical Devices              | NCH Corp.-Chemsearch Division         |
| Atrion Corp.                       | Nurse Assist Inc.                     |
| Flex Medical Disposables           | Omni Hearing Systems                  |
| Benchmark Research                 | OraMetrix Inc.                        |
| Biomat USA                         | Orthofix                              |
| Bio-Synthesis Inc.                 | OsteoMed                              |
| Bledsoe Brace Systems              | Oxysure Systems Inc.                  |
| Boval BioSolutions                 | Pathologists Bio Medical Lab          |
| Brady Precision Converting LLC     | Plexon Inc                            |
| Cardinal Health 200 Inc.           | Prestige Ameritech Ltd.               |
| Caris Diagnostics Inc.             | Professional Clinical Laboratory Inc. |
| Ceutical Labs                      | Progressive Laboratories              |
| Covance                            | Quest Diagnostics Inc.                |
| Dallas Pathology Associates Inc.   | Quest Medical Inc.                    |
| DFB Pharmaceuticals                | RBC Life Sciences Inc.                |
| Essilor of America                 | Reata Pharmaceuticals                 |
| Flextronics                        | Reliance Mobile Diagnostic Services   |
| Food Safety Net Services           | Retractable Technologies Inc.         |
| Galderma Laboratories LP           | Royal Baths Manufacturing Co Inc.     |
| GlaxoSmithKline                    | Smith & Nephew                        |
| Gradalis                           | St. Jude Medical                      |
| Greatbatch                         | Stryker Imaging Corp.                 |
| Hanger Inc.                        | Telecris Plasma Resources             |
| Healthpoint Ltd.                   | Texas Oncology                        |
| Humanetics II Ltd.                 | Texas Pharmaceutical Research LP      |
| MacuClear                          | Texel Industries                      |
| Mary Crowley Cancer Research       | TissueGen                             |
| Med Fusion LLC                     | United Surgical Partners              |
| Medtronic Mitas Rex                |                                       |
| Mentor Texas LP                    |                                       |

# MAKING MORE OF LIFE

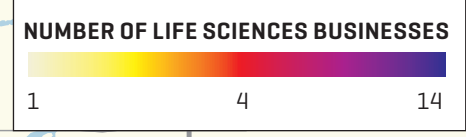
THE DFW REGION IS ON THE CUTTING EDGE OF DEFINING NEW RESEARCH TRENDS AND OPPORTUNITIES IN LIFE SCIENCES.



CANCER PREVENTION & RESEARCH INSTITUTE OF TEXAS

- > CPRIT's goal is to expedite innovation and commercialization in the area of cancer research and to enhance access to evidence-based prevention programs and services throughout Texas.
- > CPRIT accepts applications and awards grants for a wide variety of cancer-related research and for the delivery of cancer prevention programs and services by public and private entities located in Texas.
- > CPRIT collaborates with a variety of entities, including public and private institutions of higher education, academic health institutions, universities, governmental organizations, nongovernmental organizations, and public and private companies.

INDUSTRY	ESTABLISHMENTS	AVG. EMPLOYMENT
BASIC CHEMICAL MANUFACTURING	65	1,992
PHARMACEUTICAL AND MEDICINE MANUFACTURING	52	3,989
MEDICAL EQUIPMENT AND SUPPLIES MANUFACTURING	220	5,641
SCIENTIFIC RESEARCH AND DEVELOPMENT SERVICES	318	5,439
MEDICAL LABORATORIES	264	5,006
DIAGNOSTIC IMAGING CENTERS	232	4,060
<b>TOTAL</b>	<b>1,149</b>	<b>26,127</b>



<b>BIOMEDICAL ENGINEERS</b> 237   \$46.79	<b>CHEMICAL ENGINEERS</b> 665   \$53.99	<b>MEDICAL SCIENTISTS, EXCEPT EPIDEMIOLOGISTS</b> 659   \$30.09	<b>CHEMISTS</b> 1,401   \$35.30	<b>ENVIRONMENTAL SCIENTISTS AND SPECIALISTS, INCLUDING HEALTH</b> 1,070   \$42.59	<b>PHARMACISTS</b> 5,934   \$59.02	<b>DIAGNOSTIC MEDICAL SONOGRAPHERS</b> 1,352   \$34.45	<b>PHARMACY TECHNICIANS</b> 9,361   \$15.47	<b>OPHTHALMIC LABORATORY TECHNICIANS</b> 1,390   \$14.83

**LEGEND:**  
OCCUPATION  
JOBS | MEDIAN HOURLY EARNINGS

SOURCE: EMSI, QCEW Q42017; OES 2016